

## petC polyclonal antibody

Catalog: BS67714

Host: Rabbit

Reactivity: Arabidopsis thaliana

### BackGround:

Essential protein for photoautotrophism. Confers resistance to photo-oxidative damages by contributing to the thermal dissipation of light energy and to luminal acidification (increase of pH gradient). Component of the cytochrome b6-f complex, which mediates electron transfer between photosystem II (PSII) and photosystem I (PSI), cyclic electron flow around PSI, and state transitions.

### Product:

Liquid in 0.42% Potassium phosphate, 0.87% Sodium chloride, pH 7.3, 30% glycerol, and 0.01% sodium azide.

### Molecular Weight:

~ 23 kDa

### Swiss-Prot:

Q9ZR03

### Purification&Purity:

The antibody was purified by immunogen affinity chromatography.

### Applications:

WB (1/500 - 1/2000)

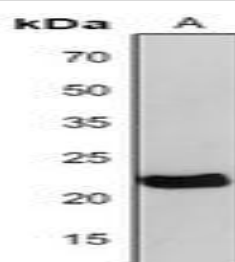
### Storage&Stability:

Store at 4 °C short term. Aliquot and store at -20 °C long term. Avoid freeze-thaw cycles.

### Specificity:

Recognizes endogenous levels of petC protein.

### DATA:



Western blot analysis of petC expression in Arabidopsis thaliana (A) whole cell lysates.

### Note:

For research use only, not for use in diagnostic procedure.

### Bioworld Technology, Inc.

Add: 1660 South Highway 100, Suite 500 St. Louis Park, MN 55416, USA.

Email: [info@bioworld.com](mailto:info@bioworld.com)

Tel: 6123263284

Fax: 6122933841

### Bioworld technology, co. Ltd.

Add: No 9, weidi road Qixia District Nanjing, 210046, P. R. China.

Email: [info@biogol.com](mailto:info@biogol.com)

Tel: 0086-025-68037686

Fax: 0086-025-68035151