

## ABI2 polyclonal antibody

Catalog: BS67696

Host: Rabbit

Reactivity: Arabidopsis thaliana

### BackGround:

Repressor of the abscisic acid (ABA) signaling pathway that regulates numerous ABA responses, such as stomatal closure, osmotic water permeability of the plasma membrane (Pos), high light stress, response to glucose, seed germination and inhibition of vegetative growth. During the stomatal closure regulation, modulates the inward calcium-channel permeability as well as H<sub>2</sub>O<sub>2</sub> and oxidative burst in response to ABA and dehydration. Represses GHR1 and, to some extent, SRK2E/OST1, kinases involved in the regulation of SLAC1-dependent stomatal closure. Controls negatively fibrillin that is involved in mediating ABA-induced photoprotection. May be implicated in ABA content regulation. Involved in acquired thermotolerance of root growth and seedling survival. Required for the *Erwinia amylovora* harpin-induced (HrpN) drought tolerance. Involved in the hydrotropic response.

### Product:

Liquid in 0.42% Potassium phosphate, 0.87% Sodium chloride, pH 7.3, 30% glycerol, and 0.01% sodium azide.

### Molecular Weight:

~ 46 kDa

### Swiss-Prot:

O04719

### Purification&Purity:

The antibody was purified by immunogen affinity chromatography.

### Applications:

WB (1/500 - 1/2000)

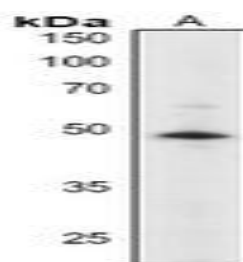
### Storage&Stability:

Store at 4 °C short term. Aliquot and store at -20 °C long term. Avoid freeze-thaw cycles.

### Specificity:

Recognizes endogenous levels of ABI2 protein.

### DATA:



Western blot analysis of ABI2 expression in Arabidopsis thaliana (A) whole cell lysates.

### Note:

For research use only, not for use in diagnostic procedure.

### Bioworld Technology, Inc.

Add: 1660 South Highway 100, Suite 500 St. Louis Park, MN 55416, USA.

Email: [info@bioworld.com](mailto:info@bioworld.com)

Tel: 6123263284

Fax: 6122933841

### Bioworld technology, co. Ltd.

Add: No 9, weidi road Qixia District Nanjing, 210046, P. R. China.

Email: [info@biogot.com](mailto:info@biogot.com)

Tel: 0086-025-68037686

Fax: 0086-025-68035151