

## RASSF6 polyclonal antibody

Catalog: BS67661

Host: Rabbit

Reactivity: Human, Mouse, Rat

**BackGround:**

Involved in the induction of apoptosis, through both caspase-dependent and caspase-independent pathways. May act as a Ras effector protein. May suppress the serum-induced basal levels of NF-kappa-B (By similarity).

**Product:**

Liquid in 0.42% Potassium phosphate, 0.87% Sodium chloride, pH 7.3, 30% glycerol, and 0.01% sodium azide.

**Molecular Weight:**

~ 34 kDa

**Swiss-Prot:**

Q6ZTQ3

**Purification&Purity:**

The antibody was purified by immunogen affinity chromatography.

**Applications:**

WB (1/500 - 1/1000)

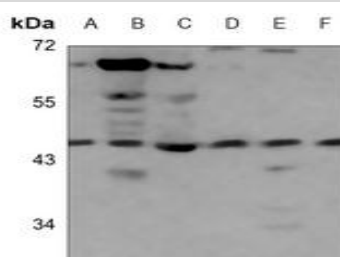
**Storage&Stability:**

Store at 4 °C short term. Aliquot and store at -20 °C long

term. Avoid freeze-thaw cycles.

**Specificity:**

Recognizes endogenous levels of RASSF6 protein.

**DATA:**

Western blot analysis of RASSF6 expression in HEK293T (A), HCT116 (B), H1792 (C), mouse spleen (D), mouse kidney (E), rat spleen (F) whole cell lysates.

**Note:**

For research use only, not for use in diagnostic procedure.

**Bioworld Technology, Inc.**

Add: 1660 South Highway 100, Suite 500 St. Louis Park, MN 55416, USA.

Email: [info@bioworld.com](mailto:info@bioworld.com)

Tel: 6123263284

Fax: 6122933841

**Bioworld technology, co. Ltd.**

Add: No 9, weidi road Qixia District Nanjing, 210046, P. R. China.

Email: [info@biogot.com](mailto:info@biogot.com)

Tel: 0086-025-68037686

Fax: 0086-025-68035151