

LPAAT epsilon polyclonal antibody

Catalog: BS67634

Host: Rabbit

Reactivity: Human, Mouse

BackGround:

Converts 1-acyl-sn-glycerol-3-phosphate (lysophosphatidic acid or LPA) into 1,2-diacyl-sn-glycerol-3-phosphate (phosphatidic acid or PA) by incorporating an acyl moiety at the sn-2 position of the glycerol backbone . Acts on LPA containing saturated or unsaturated fatty acids C15:0-C20:4 at the sn-1 position using C18:1-CoA as the acyl donor . Also acts on lysophosphatidylethanolamine using oleoyl-CoA, but not arachidonoyl-CoA, and lysophosphatidylinositol using arachidonoyl-CoA, but not oleoyl-CoA . Activity toward lysophosphatidylglycerol not detectable .

Product:

Liquid in 0.42% Potassium phosphate, 0.87% Sodium chloride, pH 7.3, 30% glycerol, and 0.01% sodium azide.

Molecular Weight:

~ 45 kDa

Swiss-Prot:

Q9NUQ2

Purification&Purity:

The antibody was purified by immunogen affinity chromatography.

Applications:

WB (1/500 - 1/1000)

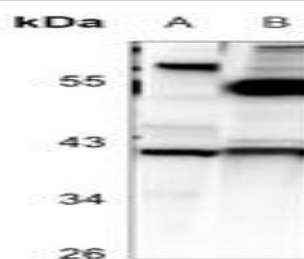
Storage&Stability:

Store at 4 °C short term. Aliquot and store at -20 °C long term. Avoid freeze-thaw cycles.

Specificity:

Recognizes endogenous levels of LPAAT epsilon protein.

DATA:



Western blot analysis of LPAAT epsilon expression in mouse liver (A), THP1 (B) whole cell lysates.

Note:

For research use only, not for use in diagnostic procedure.

Bioworld Technology, Inc.

Add: 1660 South Highway 100, Suite 500 St. Louis Park, MN 55416, USA.

Email: info@bioworld.com

Tel: 6123263284

Fax: 6122933841

Bioworld technology, co. Ltd.

Add: No 9, weidi road Qixia District Nanjing, 210046, P. R. China.

Email: info@biogol.com

Tel: 0086-025-68037686

Fax: 0086-025-68035151