

**RGAG1 polyclonal antibody**

Catalog: BS67609

Host: Rabbit

Reactivity: Human

**BackGround:**

RTL9 is one of at least 11 genes called Mar or Mart related to long terminal repeat retrotransposons. They do not correspond to functional retrotransposons, but rather to neofunctionalized retrotransposons genes.

**Product:**

Liquid in 0.42% Potassium phosphate, 0.87% Sodium chloride, pH 7.3, 30% glycerol, and 0.01% sodium azide.

**Molecular Weight:**

~ 110 kDa

**Swiss-Prot:**

Q8NET4

**Purification&Purity:**

The antibody was purified by immunogen affinity chromatography.

**Applications:**

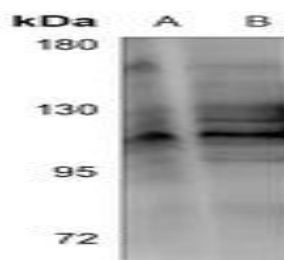
WB (1/500 - 1/1000)

**Storage&Stability:**

Store at 4 °C short term. Aliquot and store at -20 °C long term. Avoid freeze-thaw cycles.

**Specificity:**

Recognizes endogenous levels of RGAG1 protein.

**DATA:**

Western blot analysis of RGAG1 expression in K562 (A), PC3 (B) whole cell lysates.

**Note:**

For research use only, not for use in diagnostic procedure.

**Bioworld Technology, Inc.**

Add: 1660 South Highway 100, Suite 500 St. Louis Park, MN 55416, USA.

Email: [info@bioworld.com](mailto:info@bioworld.com)

Tel: 6123263284

Fax: 6122933841

**Bioworld technology, co. Ltd.**

Add: No 9, weidi road Qixia District Nanjing, 210046, P. R. China.

Email: [info@biogol.com](mailto:info@biogol.com)

Tel: 0086-025-68037686

Fax: 0086-025-68035151