

LDOC1L polyclonal antibody

Catalog: BS67606

Host: Rabbit

Reactivity: Human, Mouse, Rat

BackGround:

RTL6 is one of at least 11 genes called Mar or Mart related to long terminal repeat retrotransposons. They do not correspond to functional retrotransposons, but rather to neofunctionalized retrotransposons genes.

Product:

Liquid in 0.42% Potassium phosphate, 0.87% Sodium chloride, pH 7.3, 30% glycerol, and 0.01% sodium azide.

Molecular Weight:

~ 26 kDa

Swiss-Prot:

Q6ICC9

Purification&Purity:

The antibody was purified by immunogen affinity chromatography.

Applications:

WB (1/500 - 1/1000), IHC (1/50 - 1/200)

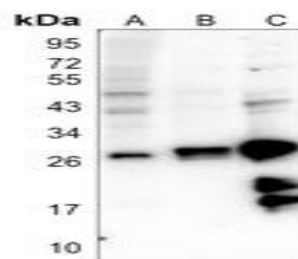
Storage&Stability:

Store at 4 °C short term. Aliquot and store at -20 °C long term. Avoid freeze-thaw cycles.

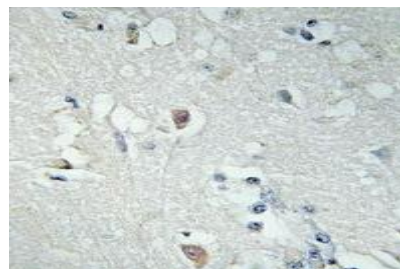
Specificity:

Recognizes endogenous levels of LDOC1L protein.

DATA:



Western blot analysis of LDOC1L expression in HEK293T (A), rat kidney (B), mouse brain (C) whole cell lysates.



Immunohistochemical analysis of LDOC1L staining in human brain formalin fixed paraffin embedded tissue section. The section was pre-treated using heat mediated antigen retrieval with sodium citrate buffer (pH 6.0). The section was then incubated with the antibody at room temperature and detected using an HRP conjugated compact polymer system. DAB was used as the chromogen. The section was then counterstained with haematoxylin and mounted with DPX.

Note:

For research use only, not for use in diagnostic procedure.

Bioworld Technology, Inc.

Add: 1660 South Highway 100, Suite 500 St. Louis Park, MN 55416, USA.

Email: info@bioworld.com

Tel: 6123263284

Fax: 6122933841

Bioworld technology, co. Ltd.

Add: No 9, weidi road Qixia District Nanjing, 210046, P. R. China.

Email: info@biogot.com

Tel: 0086-025-68037686

Fax: 0086-025-68035151