

Claudin 7 (Phospho-Y210) polyclonal antibody

Catalog: BS67591

Host: Rabbit

Reactivity: Human, Rat

BackGround:

Plays a major role in tight junction-specific obliteration of the intercellular space.

Product:

Liquid in 0.42% Potassium phosphate, 0.87% Sodium chloride, pH 7.3, 30% glycerol, and 0.01% sodium azide.

Molecular Weight:

~ 27 kDa

Swiss-Prot:

O95471

Purification&Purity:

The antibody was purified by immunogen affinity chromatography.

Applications:

WB (1/500 - 1/1000)

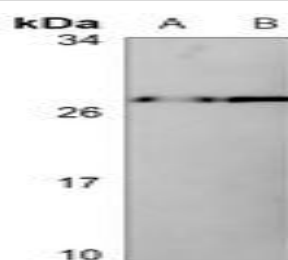
Storage&Stability:

Store at 4 °C short term. Aliquot and store at -20 °C long

term. Avoid freeze-thaw cycles.

Specificity:

Recognizes endogenous levels of Claudin 7 with a phosphorylation site at Y210 protein.

DATA:

Western blot analysis of Claudin 7 (pY210) expression in rat liver (A), rat kidney (B) whole cell lysates.

Note:

For research use only, not for use in diagnostic procedure.

Bioworld Technology, Inc.

Add: 1660 South Highway 100, Suite 500 St. Louis Park, MN 55416, USA.

Email: info@bioworld.com

Tel: 6123263284

Fax: 6122933841

Bioworld technology, co. Ltd.

Add: No 9, weidi road Qixia District Nanjing, 210046, P. R. China.

Email: info@biogol.com

Tel: 0086-025-68037686

Fax: 0086-025-68035151