

ATRIP (Phospho-S68) polyclonal antibody

Catalog: BS67583

Host: Rabbit

Reactivity: Human, Mouse, Rat

BackGround:

In response to genomic stress, the ATR interacting protein (ATRIP) binds and is phosphorylated by the DNA damage-and checkpoint-activated kinase ATR (ataxia-telangiectasia mutated and rad3-related). Both ATR and ATRIP are integral for checkpoint signaling and are critical in the DNA repair response. Direct interaction between ATRIP and replication protein A (RPA) at RPA-coated, single-stranded DNA results in the recruitment of phosphorylated ATR/ATRIP to stalled replication forks and sites of DNA damage. ATR/ATRIP coordinate DNA repair and cell cycle progression in conjunction with key regulatory proteins, such as Rad17 and the 9-1-1 complex. ATR associated with ATRIP can also be stimulated by topoisomerase II binding protein (TOPBP1), suggesting that ATRIP may regulate both ATR localization and activity.

Product:

Liquid in 0.42% Potassium phosphate, 0.87% Sodium chloride, pH 7.3, 30% glycerol, and 0.01% sodium azide.

Molecular Weight:

~ 80 kDa

Swiss-Prot:

Q8WXE1

Purification&Purity:

The antibody was purified by immunogen affinity chromatography.

Applications:

WB (1/500 - 1/1000)

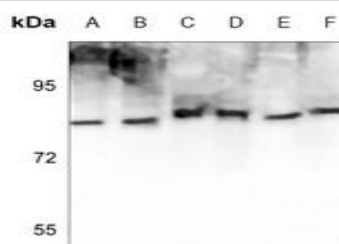
Storage&Stability:

Store at 4 °C short term. Aliquot and store at -20 °C long term. Avoid freeze-thaw cycles.

Specificity:

Recognizes endogenous levels of ATRIP with a phosphorylation site at S68 protein.

DATA:



Western blot analysis of ATRIP (pS68) expression in HCT116 (A), A375 (B), mouse liver (C), mouse muscle (D), rat liver (E), rat muscle (F) whole cell lysates.

Note:

For research use only, not for use in diagnostic procedure.

Bioworld Technology, Inc.

Add: 1660 South Highway 100, Suite 500 St. Louis Park, MN 55416, USA.

Email: info@bioworld.com

Tel: 6123263284

Fax: 6122933841

Bioworld technology, co. Ltd.

Add: No 9, weidi road Qixia District Nanjing, 210046, P. R. China.

Email: info@biogot.com

Tel: 0086-025-68037686

Fax: 0086-025-68035151