

**CD62L polyclonal antibody**

Catalog: BS67504

Host: Rabbit

Reactivity: Human, Mouse

**BackGround:**

Calcium-dependent lectin that mediates cell adhesion by binding to glycoproteins on neighboring cells .

Mediates the adherence of lymphocytes to endothelial cells of high endothelial venules in peripheral lymph nodes. Promotes initial tethering and rolling of leukocytes in endothelia .

**Product:**

Liquid in 0.42% Potassium phosphate, 0.87% Sodium chloride, pH 7.3, 30% glycerol, and 0.01% sodium azide.

**Molecular Weight:**

~ 72 kDa

**Swiss-Prot:**

P14151

**Purification&Purity:**

The antibody was purified by immunogen affinity chromatography.

**Applications:**

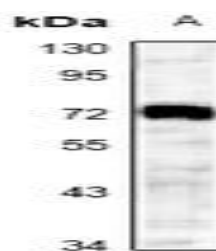
WB (1/500 - 1/1000)

**Storage&Stability:**

Store at 4 °C short term. Aliquot and store at -20 °C long term. Avoid freeze-thaw cycles.

**Specificity:**

Recognizes endogenous levels of CD62L protein.

**DATA:**

Western blot analysis of CD62L expression in SP20 (A) whole cell lysates.

**Note:**

For research use only, not for use in diagnostic procedure.

**Bioworld Technology, Inc.**

Add: 1660 South Highway 100, Suite 500 St. Louis Park, MN 55416, USA.

Email: [info@bioworld.com](mailto:info@bioworld.com)

Tel: 6123263284

Fax: 6122933841

**Bioworld technology, co. Ltd.**

Add: No 9, weidi road Qixia District Nanjing, 210046, P. R. China.

Email: [info@biogol.com](mailto:info@biogol.com)

Tel: 0086-025-68037686

Fax: 0086-025-68035151