

Collagen 5 alpha 1 polyclonal antibody

Catalog: BS67487

Host: Rabbit

Reactivity: Human, Mouse, Rat

BackGround:

The Extracellular Matrix (ECM) is a complex network of macromolecules that provides structural tissue support to cells in the basement membrane and interstitial matrix. It is composed of many molecules including proteins, glycoproteins, proteoglycans, and polysaccharides. One of the major proteins that comprises the ECM, and the human body, is collagen. Collagens are a large family of proteins. They are trimeric molecules comprised of three alpha polypeptide chains that form a triple helix structure that is characteristic of all collagens. The large family of collagens is divided into three subgroups: the fibrillar collagens, the non-fibril forming collagens, and the fibril-associated collagens. These sub groups differ in their structure and supramolecular assembly. COL5A1 is a minor fibrillar collagen expressed broadly across tissues. It participates in bone and cartilage development, and defects in the COL5A1 gene leads to Ehlers-Danlos Syndrome, a condition that affects the integrity of bones, cartilage, and skin. Several proteomics, gene profiling, and biochemical studies have indicated that aberrant COL5A1 may play a malignant role in various types of cancer including breast, renal, colon, prostate, lung, and others.

Product:

Liquid in 0.42% Potassium phosphate, 0.87% Sodium chloride, pH 7.3, 30% glycerol, and 0.01% sodium azide.

Molecular Weight:

~ 180 kDa

Swiss-Prot:

P20908

Purification&Purity:

The antibody was purified by immunogen affinity chromatography.

Applications:

WB (1/500 - 1/1000)

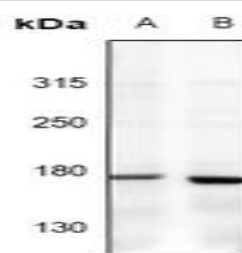
Storage&Stability:

Store at 4 °C short term. Aliquot and store at -20 °C long term. Avoid freeze-thaw cycles.

Specificity:

Recognizes endogenous levels of Collagen 5 alpha 1 protein.

DATA:



Western blot analysis of Collagen 5 alpha 1 expression in C6 (A), CT26 (B) whole cell lysates.

Note:

For research use only, not for use in diagnostic procedure.

Bioworld Technology, Inc.

Add: 1660 South Highway 100, Suite 500 St. Louis Park, MN 55416, USA.

Email: info@bioworld.com

Tel: 6123263284

Fax: 6122933841

Bioworld technology, co. Ltd.

Add: No 9, weidi road Qixia District Nanjing, 210046, P. R. China.

Email: info@biogot.com

Tel: 0086-025-68037686

Fax: 0086-025-68035151