

## ECM1 polyclonal antibody

Catalog: BS67483

Host: Rabbit

Reactivity: Human, Mouse

### BackGround:

Extracellular matrix gene 1 (ECM1) is a secreted glycoprotein found primarily in the extracellular matrix. It acts as both a multifunctional binding core and as a scaffolding protein that interacts with a variety of extracellular and structural proteins, including perlecan, fibulin-1C/1D, and MMP-9. Research studies have shown that ECM1 is involved in the maintenance of tissue integrity and homeostasis, T cell immune responses, and angiogenesis. Its importance in maintaining tissue integrity is demonstrated by reports showing that mutations in the gene encoding ECM1 lead to skin lipid proteinosis. Notably, ECM1 expression is upregulated in a variety of cancers, and during metastasis, suggesting a role for ECM1 in promoting tumor cell proliferation and invasion. In this context, research studies have shown that ECM1 can activate various signaling pathways, such as integrin/FAK, MMP-9/galectin-3, and S100A4/RhoA. In hepatic tissues, it was furthermore shown that ECM1 contributes to maintaining the latency of TGF- $\beta$  in the extracellular matrix, thereby preventing spontaneous TGF- $\beta$  activation and liver fibrosis.

### Product:

Liquid in 0.42% Potassium phosphate, 0.87% Sodium chloride, pH 7.3, 30% glycerol, and 0.01% sodium azide.

### Molecular Weight:

~ 75 kDa

### Swiss-Prot:

Q16610

### Purification&Purity:

The antibody was purified by immunogen affinity chromatography.

### Applications:

WB (1/500 - 1/1000), IHC (1/50 - 1/200)

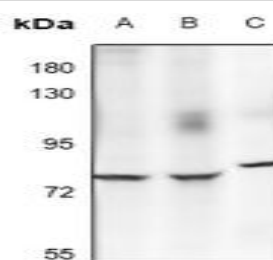
### Storage&Stability:

Store at 4 °C short term. Aliquot and store at -20 °C long term. Avoid freeze-thaw cycles.

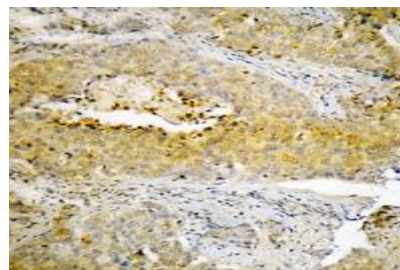
### Specificity:

Recognizes endogenous levels of ECM1 protein.

### DATA:



Western blot analysis of ECM1 expression in MCF7 (A), A375 (B), mouse brain (C) whole cell lysates.



Immunohistochemical analysis of ECM1 staining in human breast cancer formalin fixed paraffin embedded tissue section. The section was pre-treated using heat mediated antigen retrieval with sodium citrate buffer (pH 6.0). The section was then incubated with the antibody at room temperature and detected using an HRP conjugated compact polymer system. DAB was used as the chromogen. The section was then counterstained with haematoxylin and mounted with DPX.

### Note:

For research use only, not for use in diagnostic procedure.

### Bioworld Technology, Inc.

Add: 1660 South Highway 100, Suite 500 St. Louis Park, MN 55416, USA.

Email: [info@bioworld.com](mailto:info@bioworld.com)

Tel: 6123263284

Fax: 6122933841

### Bioworld technology, co. Ltd.

Add: No 9, weidi road Qixia District Nanjing, 210046, P. R. China.

Email: [info@biogot.com](mailto:info@biogot.com)

Tel: 0086-025-68037686

Fax: 0086-025-68035151