

## GALM polyclonal antibody

Catalog: BS67473

Host: Rabbit

Reactivity: Human, Mouse, Rat

### BackGround:

Mutarotase that catalyzes the interconversion of beta-D-galactose and alpha-D-galactose during galactose metabolism.

Beta-D-galactose is metabolized in the liver into glucose 1-phosphate, the primary metabolic fuel, by the action of four enzymes that constitute the Leloir pathway: GALM, GALK1 (galactokinase), GALT (galactose-1-phosphate uridylyltransferase) and GALE (UDP-galactose-4'-epimerase). Involved in the maintenance of the equilibrium between the beta- and alpha-anomers of galactose, therefore ensuring a sufficient supply of the alpha-anomer for GALK1. Also active on D-glucose although shows a preference for galactose over glucose.

### Product:

Liquid in 0.42% Potassium phosphate, 0.87% Sodium chloride, pH 7.3, 30% glycerol, and 0.01% sodium azide.

### Molecular Weight:

~ 37 kDa

### Swiss-Prot:

Q96C23

### Purification&Purity:

The antibody was purified by immunogen affinity chromatography.

### Applications:

WB (1/500 - 1/1000)

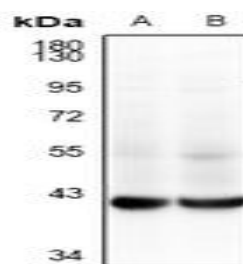
### Storage&Stability:

Store at 4 °C short term. Aliquot and store at -20 °C long term. Avoid freeze-thaw cycles.

### Specificity:

Recognizes endogenous levels of GALM protein.

### DATA:



Western blot analysis of GALM expression in mouse kidney (A), rat kidney (B) whole cell lysates.

### Note:

For research use only, not for use in diagnostic procedure.

### Bioworld Technology, Inc.

Add: 1660 South Highway 100, Suite 500 St. Louis Park, MN 55416, USA.

Email: [info@bioworld.com](mailto:info@bioworld.com)

Tel: 6123263284

Fax: 6122933841

### Bioworld technology, co. Ltd.

Add: No 9, weidi road Qixia District Nanjing, 210046, P. R. China.

Email: [info@biogot.com](mailto:info@biogot.com)

Tel: 0086-025-68037686

Fax: 0086-025-68035151