

Claudin 4 polyclonal antibody

Catalog: BS67454

Host: Rabbit

Reactivity: Human, Mouse

BackGround:

The claudin superfamily consists of many structurally related proteins in humans. These proteins are important structural and functional components of tight junctions in paracellular transport. Claudins are located in both epithelial and endothelial cells in all tight junction-bearing tissues. Three classes of proteins are known to localize to tight junctions, including the claudins, Occludin and junction adhesion molecule. Claudins, which consist of four transmembrane domains and two extracellular loops make up tight junction strands. Claudin expression is highly restricted to specific regions of different tissues and may have an important role in transcellular transport through tight junctions. Claudin-4 is not expressed in rat liver, whereas in pancreas, claudin-4 is localized to junctions of the duct epithelia and junctions of acinar cells. In the rat gut, claudin-4 displays highly restricted expression to colonic surface cells. The human claudin-4 gene maps to chromosome 7q11.23.

Product:

Liquid in 0.42% Potassium phosphate, 0.87% Sodium chloride, pH 7.3, 30% glycerol, and 0.01% sodium azide.

Molecular Weight:

~ 22 kDa

Swiss-Prot:

O14493

Purification&Purity:

The antibody was purified by immunogen affinity chromatography.

Applications:

WB (1/500 - 1/1000), IHC (1/50 - 1/200)

Storage&Stability:

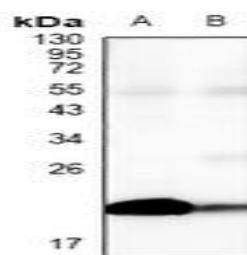
Store at 4 °C short term. Aliquot and store at -20 °C long

term. Avoid freeze-thaw cycles.

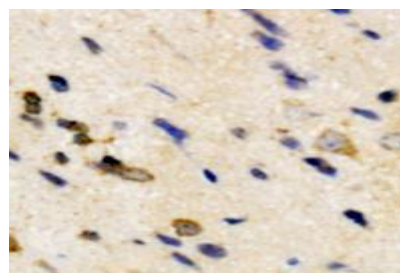
Specificity:

Recognizes endogenous levels of Claudin 4 protein.

DATA:



Western blot analysis of Claudin 4 expression in HCT116 (A), Panc1 (B) whole cell lysates.



Immunohistochemical analysis of Claudin 4 staining in human brain formalin fixed paraffin embedded tissue section. The section was pre-treated using heat mediated antigen retrieval with sodium citrate buffer (pH 6.0). The section was then incubated with the antibody at room temperature and detected using an HRP conjugated compact polymer system. DAB was used as the chromogen. The section was then counterstained with haematoxylin and mounted with DPX.

Note:

For research use only, not for use in diagnostic procedure.

Bioworld Technology, Inc.

Add: 1660 South Highway 100, Suite 500 St. Louis Park, MN 55416, USA.

Email: info@bioworld.com

Tel: 6123263284

Fax: 6122933841

Bioworld technology, co. Ltd.

Add: No 9, weidi road Qixia District Nanjing, 210046, P. R. China.

Email: info@biogot.com

Tel: 0086-025-68037686

Fax: 0086-025-68035151