

## Rhodopsin (Phospho-S334) polyclonal antibody

Catalog: BS67426

Host: Rabbit

Reactivity: Human, Mouse

### BackGround:

Rhodopsin is the photoreceptor in the retinal rods. It is activated by photons, transduces visual information through its cognate G protein, transducin, and is inactivated by arrestin binding. Using atomic-force microscopy, rhodopsin was found to be arranged into paracrystalline arrays of dimers in mouse disc membranes. Rhodopsin is considered to be the prototype of G protein-coupled receptors (GPCRs), and is the first GPCR for which a crystal structure was solved. Research studies have linked mutations in the gene encoding rhodopsin to retinitis pigmentosa, a disease characterized by retinal degeneration resulting in reduced peripheral vision and night blindness.

### Product:

Liquid in 0.42% Potassium phosphate, 0.87% Sodium chloride, pH 7.3, 30% glycerol, and 0.01% sodium azide.

### Molecular Weight:

~ 40 kDa

### Swiss-Prot:

P08100

### Purification&Purity:

The antibody was purified by immunogen affinity chromatography.

### Applications:

WB (1/500 - 1/1000), IHC (1/50 - 1/200)

### Storage&Stability:

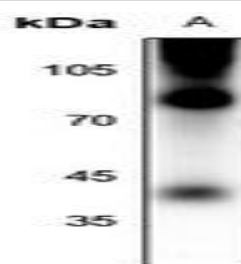
Store at 4 °C short term. Aliquot and store at -20 °C long term. Avoid freeze-thaw cycles.

### Specificity:

Recognizes endogenous levels of Rhodopsin with a site at

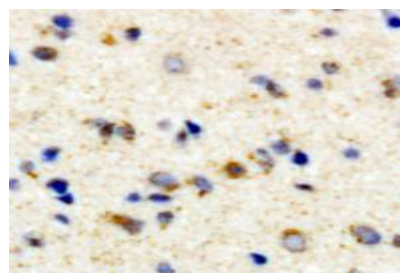
pS334 protein.

### DATA:



Western blot analysis of Rhodopsin (pS334) expression in mouse eyes

(A) whole cell lysates.



Immunohistochemical analysis of Rhodopsin (pS334) staining in human brain formalin fixed paraffin embedded tissue section. The section was pre-treated using heat mediated antigen retrieval with sodium citrate buffer (pH 6.0). The section was then incubated with the antibody at room temperature and detected using an HRP conjugated compact polymer system. DAB was used as the chromogen. The section was then counterstained with haematoxylin and mounted with DPX.

### Note:

For research use only, not for use in diagnostic procedure.

### Bioworld Technology, Inc.

Add: 1660 South Highway 100, Suite 500 St. Louis Park, MN 55416, USA.

Email: [info@bioworld.com](mailto:info@bioworld.com)

Tel: 6123263284

Fax: 6122933841

### Bioworld technology, co. Ltd.

Add: No 9, weidi road Qixia District Nanjing, 210046, P. R. China.

Email: [info@biogot.com](mailto:info@biogot.com)

Tel: 0086-025-68037686

Fax: 0086-025-68035151