

## SerpinB1 polyclonal antibody

Catalog: BS67418

Host: Rabbit

Reactivity: Human, Mouse, Rat

### BackGround:

The serine proteinase inhibitors (serpins) compose a superfamily of proteins with a diverse set of functions, including the control of blood coagulation, complement activation, programmed cell death and development. Serpins are secreted glycoproteins that contain a stretch of peptide that mimics a true substrate for a corresponding serine protease. The monocyte/neutrophil elastase inhibitor gene, SerpinB1, belongs to the ov-serpin family (ovalbuminrelated serpins). Human SerpinB1, also designated monocyte/neutrophil elastase inhibitor (M/NEI) or leukocyte elastase inhibitor (LEI), is a cytoplasmic protein which acts as a fast-acting stoichiometric proteinase inhibitor that regulates the activity of neutrophil elastase (NE), cathepsin-G and proteinase-3. There are four homologous genes in mouse designated SerpinB1a, SerpinB1b, SerpinB1c and the pseudogene, SerpinB1-ps1. The three protein-coding genes share significant sequence identity, however SerpinB1a (also designated EIA) has been characterized as the functional ortholog of human SerpinB1.

### Product:

Liquid in 0.42% Potassium phosphate, 0.87% Sodium chloride, pH 7.3, 30% glycerol, and 0.01% sodium azide.

### Molecular Weight:

~ 43 kDa

### Swiss-Prot:

P30740

### Purification&Purity:

The antibody was purified by immunogen affinity chromatography.

### Applications:

WB (1/500 - 1/1000), IHC (1/50 - 1/200)

### Storage&Stability:

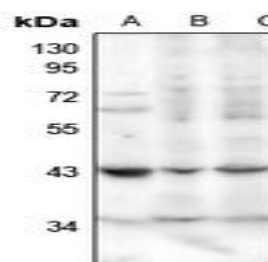
Store at 4 °C short term. Aliquot and store at -20 °C long

term. Avoid freeze-thaw cycles.

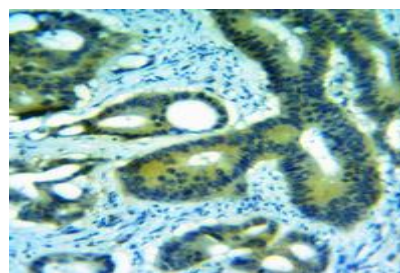
### Specificity:

Recognizes endogenous levels of SerpinB1 protein.

### DATA:



Western blot analysis of SerpinB1 expression in rat spleen (A), My-1a2059 (B), K562 (C) whole cell lysates.



Immunohistochemical analysis of SerpinB1 staining in human breast cancer formalin fixed paraffin embedded tissue section. The section was pre-treated using heat mediated antigen retrieval with sodium citrate buffer (pH 6.0). The section was then incubated with the antibody at room temperature and detected using an HRP conjugated compact polymer system. DAB was used as the chromogen. The section was then counterstained with haematoxylin and mounted with DPX.

### Note:

For research use only, not for use in diagnostic procedure.

### Bioworld Technology, Inc.

Add: 1660 South Highway 100, Suite 500 St. Louis Park, MN 55416, USA.

Email: [info@bioworld.com](mailto:info@bioworld.com)

Tel: 6123263284

Fax: 6122933841

### Bioworld technology, co. Ltd.

Add: No 9, weidi road Qixia District Nanjing, 210046, P. R. China.

Email: [info@biogot.com](mailto:info@biogot.com)

Tel: 0086-025-68037686

Fax: 0086-025-68035151