

Mimecan polyclonal antibody

Catalog: BS67417

Host: Rabbit

Reactivity: Human, Bovine

BackGround:

The small leucine-rich proteoglycan (SLRP) family of proteins contains various proteins such as Decorin, Biglycan, Fibromodulin, Keratocan, Lumican, Osteoadherin and Osteoglycin. These proteins all have similar functions as they all mediate extracellular matrix organization and act as binding partners of TGF β . Osteoglycin, which also may be designated osteoinductive factor (OIF), is a secreted protein detected in bone tissues. Osteoglycin induces the formation of bone in conjunction with either TGF β 1 or TGF β 2. The precursor form of the OGN gene product, designated Mimecan, is subject to in situ proteolytic cleavage to yield the mature Osteoglycin.

Product:

Liquid in 0.42% Potassium phosphate, 0.87% Sodium chloride, pH 7.3, 30% glycerol, and 0.01% sodium azide.

Molecular Weight:

~ 34 kDa

Swiss-Prot:

P20774

Purification&Purity:

The antibody was purified by immunogen affinity chromatography.

Applications:

WB (1/500 - 1/1000)

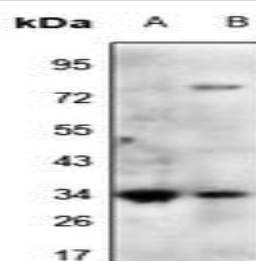
Storage&Stability:

Store at 4 °C short term. Aliquot and store at -20 °C long term. Avoid freeze-thaw cycles.

Specificity:

Recognizes endogenous levels of Mimecan protein.

DATA:



Western blot analysis of Mimecan expression in SKOV3 (A), PC3 (B) whole cell lysates.

Note:

For research use only, not for use in diagnostic procedure.

Bioworld Technology, Inc.

Add: 1660 South Highway 100, Suite 500 St. Louis Park, MN 55416, USA.

Email: info@bioworld.com

Tel: 6123263284

Fax: 6122933841

Bioworld technology, co. Ltd.

Add: No 9, weidi road Qixia District Nanjing, 210046, P. R. China.

Email: info@biogol.com

Tel: 0086-025-68037686

Fax: 0086-025-68035151