

PAR1 polyclonal antibody

Catalog: BS67416

Host: Rabbit

Reactivity: Human, Mouse, Rat

BackGround:

PAR1 (F2R) belongs to the PAR (Protease-Activated Receptor) family of G protein-coupled receptors. These membrane receptors are activated through amino terminal cleavage of the receptor by serine proteases such as thrombin, trypsin, or matrix metalloproteinases. Protease-mediated cleavage exposes the 'tethered-ligand' fragment of the receptor; this binds to a second extracellular loop of the receptor and triggers receptor activation. Activated PAR1 couples to distinct G-protein complexes or arrestins, further relaying signals to downstream players (e.g., phospholipase C, Rho-kinase). PAR1 function is necessary for normal physiological processes such as hemostasis, platelet activation, and thrombosis, whereas abnormal activation of PAR1 has been associated with inflammatory disorders, cardiovascular diseases, and metastasis.

Product:

Liquid in 0.42% Potassium phosphate, 0.87% Sodium chloride, pH 7.3, 30% glycerol, and 0.01% sodium azide.

Molecular Weight:

~ 47 kDa

Swiss-Prot:

P25116

Purification&Purity:

The antibody was purified by immunogen affinity chromatography.

Applications:

WB (1/500 - 1/1000)

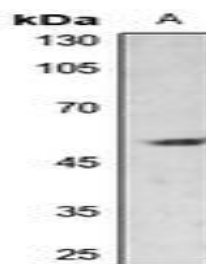
Storage&Stability:

Store at 4 °C short term. Aliquot and store at -20 °C long term. Avoid freeze-thaw cycles.

Specificity:

Recognizes endogenous levels of PAR1 protein.

DATA:



Western blot analysis of PAR1 expression in U2OS (A) whole cell lysates.

Note:

For research use only, not for use in diagnostic procedure.

Bioworld Technology, Inc.

Add: 1660 South Highway 100, Suite 500 St. Louis Park, MN 55416, USA.

Email: info@bioworld.com

Tel: 6123263284

Fax: 6122933841

Bioworld technology, co. Ltd.

Add: No 9, weidi road Qixia District Nanjing, 210046, P. R. China.

Email: info@biogot.com

Tel: 0086-025-68037686

Fax: 0086-025-68035151