

CD159c polyclonal antibody

Catalog: BS67365

Host: Rabbit

Reactivity: Human, Mouse, Rat

BackGround:

Immune activating receptor involved in self-nonsel self discrimination. In complex with KLRD1 on cytotoxic lymphocyte subsets, recognizes non-classical major histocompatibility (MHC) class Ib HLA-E loaded with signal sequence-derived peptides from non-classical MHC class Ib HLA-G molecules, likely playing a role in the generation and effector functions of adaptive natural killer (NK) cells and in maternal-fetal tolerance during pregnancy.

Product:

Liquid in 0.42% Potassium phosphate, 0.87% Sodium chloride, pH 7.3, 30% glycerol, and 0.01% sodium azide.

Molecular Weight:

~ 27 kDa

Swiss-Prot:

P26717

Purification&Purity:

The antibody was purified by immunogen affinity chromatography.

Applications:

WB (1/500 - 1/1000)

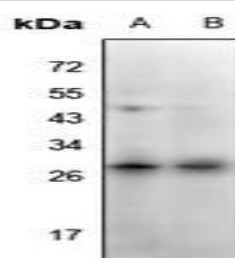
Storage&Stability:

Store at 4 °C short term. Aliquot and store at -20 °C long term. Avoid freeze-thaw cycles.

Specificity:

Recognizes endogenous levels of CD159c protein.

DATA:



Western blot analysis of CD159c expression in rat spleen (A), mouse spleen (B) whole cell lysates.

Note:

For research use only, not for use in diagnostic procedure.

Bioworld Technology, Inc.

Add: 1660 South Highway 100, Suite 500 St. Louis Park, MN 55416, USA.

Email: info@bioworld.com

Tel: 6123263284

Fax: 6122933841

Bioworld technology, co. Ltd.

Add: No 9, weidi road Qixia District Nanjing, 210046, P. R. China.

Email: info@biogot.com

Tel: 0086-025-68037686

Fax: 0086-025-68035151