

## SAT1 polyclonal antibody

Catalog: BS67353

Host: Rabbit

Reactivity: Human, Mouse, Rat

### BackGround:

Spermidine/spermine N1-acetyltransferase 1 (SAT1) is a key enzyme in polyamine metabolism. It acts by acetylating spermidine and spermine using acetyl-coenzyme A (CoA), which alters their charge and facilitates their secretion. SAT1 activity is tightly controlled in cells, but increases quickly by excess polyamines. Its activity can also be induced by a number of other stimuli, such as oxidative stress, heat shock, insulin-like growth factor-I, and cytotoxins. Research studies have found that SAT1 is overexpressed in glioblastoma multiforme (GBM), which suggest that SAT1 may be a potential therapeutic target for GBM.

### Product:

Liquid in 0.42% Potassium phosphate, 0.87% Sodium chloride, pH 7.3, 30% glycerol, and 0.01% sodium azide.

### Molecular Weight:

~ 23 kDa

### Swiss-Prot:

P21673

### Purification&Purity:

The antibody was affinity-purified from rabbit antiserum by affinity-chromatography using epitope-specific im-

munogen and the purity is > 95% (by SDS-PAGE).

### Applications:

WB (1/500 - 1/2000)

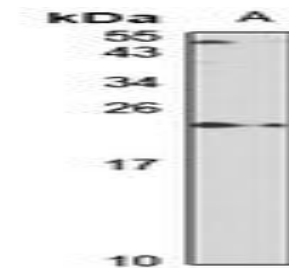
### Storage&Stability:

Store at 4 °C short term. Aliquot and store at -20 °C long term. Avoid freeze-thaw cycles.

### Specificity:

Recognizes endogenous levels of SAT1 protein

### DATA:



Western blot analysis of SAT1 expression in THP1 (A) whole cell lysates.

### Note:

For research use only, not for use in diagnostic procedure.

### Bioworld Technology, Inc.

Add: 1660 South Highway 100, Suite 500 St. Louis Park, MN 55416, USA.

Email: [info@bioworld.com](mailto:info@bioworld.com)

Tel: 6123263284

Fax: 6122933841

### Bioworld technology, co. Ltd.

Add: No 9, weidi road Qixia District Nanjing, 210046, P. R. China.

Email: [info@biogot.com](mailto:info@biogot.com)

Tel: 0086-025-68037686

Fax: 0086-025-68035151