

## Kinectin 1 polyclonal antibody

Catalog: BS67342

Host: Rabbit

Reactivity: Human, Mouse

### BackGround:

Kinectin 1 (KTN1) is an endoplasmic reticulum (ER)-enriched integral membrane protein that may be involved in the formation of ER sheets (reviewed in 1). Kinectin 1 binds the microtubule motor protein kinesin and acts as a membrane anchor for kinesin-based organelle trafficking. The interaction of kinesin with kinectin 1 has been shown to affect ER-supported focal adhesion assembly. Kinectin 1 has also been implicated in translation elongation, as an anchor for the elongation factor complex to the ER. Research investigators have shown that kinectin 1 expression is altered in multiple human pathologies, including breast cancer, hepatocellular carcinoma (HCC), Parkinson's disease, and the autoimmune syndrome Behçet's disease (BD)

### Product:

Liquid in 0.42% Potassium phosphate, 0.87% Sodium chloride, pH 7.3, 30% glycerol, and 0.01% sodium azide.

### Molecular Weight:

~ 160 kDa

### Swiss-Prot:

Q86UP2

### Purification&Purity:

The antibody was affinity-purified from rabbit antiserum

by affinity-chromatography using epitope-specific immunogen and the purity is > 95% (by SDS-PAGE).

### Applications:

WB (1/500 - 1/2000), IHC (1/50 - 1/200)

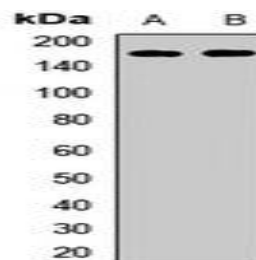
### Storage&Stability:

Store at 4 °C short term. Aliquot and store at -20 °C long term. Avoid freeze-thaw cycles.

### Specificity:

Recognizes endogenous levels of Kinectin 1 protein.

### DATA:



Western blot analysis of Kinectin 1 expression in K562 (A), mouse testis (B) whole cell lysates.

### Note:

For research use only, not for use in diagnostic procedure.

### Bioworld Technology, Inc.

Add: 1660 South Highway 100, Suite 500 St. Louis Park, MN 55416, USA.

Email: [info@bioworld.com](mailto:info@bioworld.com)

Tel: 6123263284

Fax: 6122933841

### Bioworld technology, co. Ltd.

Add: No 9, weidi road Qixia District Nanjing, 210046, P. R. China.

Email: [info@biogol.com](mailto:info@biogol.com)

Tel: 0086-025-68037686

Fax: 0086-025-68035151