

Desmoplakin polyclonal antibody

Catalog: BS67329

Host: Rabbit

Reactivity: Human, Mouse, Rat

BackGround:

Desmosomes are a class of intracellular junction that tightly link adjacent cells in mechanically stressed tissues such as the epithelium and myocardium . They derive their characteristic strength from the protein Desmoplakin, which acts as a tether by binding the cytoplasmic component of the Desmosome at it's N-terminus while its C-terminus is anchored to the intermediate-filament cytoskeleton . This association mitigates the impact of mechanical forces on the desmosome by distributing them throughout the cytoskeleton and tissue . Desmoplakin is essential for normal desmosomal adhesion ; defects can result in pathologies that include cardiomyopathy , keratoderma , or the skin blistering disease Epidermolysis bullosa .

Phospho-Desmoplakin (Ser165/166) Antibody is directed against a site that was identified at Cell Signaling Technology (CST) using PTMScan®, our LC-MS/MS platform for modification site discovery. Please visit PhosphoSitePlus®, a modification site knowledgebase developed and maintained by CST, at www.phosphosite.org for more information.

Product:

Liquid in 0.42% Potassium phosphate, 0.87% Sodium chloride, pH 7.3, 30% glycerol, and 0.01% sodium azide.

Molecular Weight:

~ 331 kDa

Swiss-Prot:

P15924

Purification&Purity:

The antibody was affinity-purified from rabbit antiserum by affinity-chromatography using epitope-specific immunogen and the purity is > 95% (by SDS-PAGE).

Applications:

WB (1/500 - 1/2000), IHC (1/50 - 1/200)

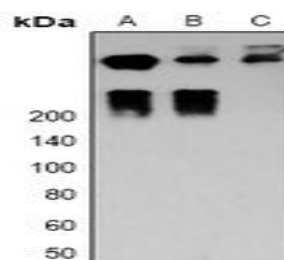
Storage&Stability:

Store at 4 °C short term. Aliquot and store at -20 °C long term. Avoid freeze-thaw cycles.

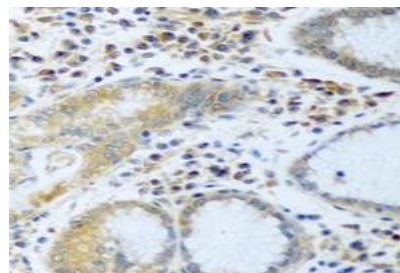
Specificity:

Recognizes endogenous levels of Desmoplakin protein.

DATA:



Western blot analysis of Desmoplakin expression in MCF7 (A), Hela (B), mouse heart (C) whole cell lysates.



Immunohistochemical analysis of Desmoplakin staining in human stomach cancer formalin fixed paraffin embedded tissue section. The section was pre-treated using heat mediated antigen retrieval with sodium citrate buffer (pH 6.0). The section was then incubated with the antibody at room temperature and detected using an HRP conjugated compact polymer system. DAB was used as the chromogen. The section was then counterstained with haematoxylin and mounted with DPX.

Note:

For research use only, not for use in diagnostic procedure.

Bioworld Technology, Inc.

Add: 1660 South Highway 100, Suite 500 St. Louis Park, MN 55416, USA.

Email: info@bioworld.com

Tel: 6123263284

Fax: 6122933841

Bioworld technology, co. Ltd.

Add: No 9, weidi road Qixia District Nanjing, 210046, P. R. China.

Email: info@biogot.com

Tel: 0086-025-68037686

Fax: 0086-025-68035151



PRODUCT DATA SHEET

Bioworld Technology, Inc.

Bioworld Technology, Inc.

Add: 1660 South Highway 100, Suite 500 St. Louis Park,
MN 55416, USA.

Email: info@bioworld.com

Tel: 6123263284

Fax: 6122933841

Bioworld technology, co. Ltd.

Add: No 9, weidi road Qixia District Nanjing, 210046,
P. R. China.

Email: info@biogot.com

Tel: 0086-025-68037686

Fax: 0086-025-68035151