

## TIC40 polyclonal antibody

Catalog: BS67303

Host: Rabbit

Reactivity: Arabidopsis thaliana

### BackGround:

Involved in protein precursor import into chloroplasts. Part of the motor complex consisting of a co-chaperone (TIC40) and a chaperone (HSP93) associated with the import channel (TIC110). Causes the release of bound transit peptides from TIC110 and stimulates ATP hydrolysis by HSP93. Involved in reinsertion of proteins from the chloroplast stroma into the inner membrane.

### Product:

Liquid in 0.42% Potassium phosphate, 0.87% Sodium chloride, pH 7.3, 30% glycerol, and 0.01% sodium azide.

### Molecular Weight:

~46 kDa

### Swiss-Prot:

Q9FMD5

### Purification&Purity:

The antibody was affinity-purified from rabbit antiserum by affinity-chromatography using epitope-specific immunogen and the purity is > 95% (by SDS-PAGE).

### Applications:

WB (1/500 - 1/2000)

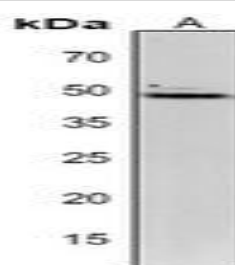
### Storage&Stability:

Store at 4 °C short term. Aliquot and store at -20 °C long term. Avoid freeze-thaw cycles.

### Specificity:

Recognizes endogenous levels of TIC40 protein.

### DATA:



Western blot analysis of TIC40 expression in Arabidopsis thaliana (A) whole cell lysates.

### Note:

For research use only, not for use in diagnostic procedure.

### Bioworld Technology, Inc.

Add: 1660 South Highway 100, Suite 500 St. Louis Park, MN 55416, USA.

Email: [info@bioworld.com](mailto:info@bioworld.com)

Tel: 6123263284

Fax: 6122933841

### Bioworld technology, co. Ltd.

Add: No 9, weidi road Qixia District Nanjing, 210046, P. R. China.

Email: [info@biogol.com](mailto:info@biogol.com)

Tel: 0086-025-68037686

Fax: 0086-025-68035151