

SCE1 polyclonal antibody

Catalog: BS67302

Host: Rabbit

Reactivity: Arabidopsis thaliana

BackGround:

SUMO-conjugating enzyme that accepts the SUMO proteins from the E1 SUMO-activating heterodimer SAE1/SAE2 and catalyzes its covalent attachment to other proteins with the E3 SUMO ligases SIZ1 and MMS21. Associates with SIZ1 for sumoylation of the transcription factor GTE3.

Product:

Liquid in 0.42% Potassium phosphate, 0.87% Sodium chloride, pH 7.3, 30% glycerol, and 0.01% sodium azide.

Molecular Weight:

~18 kDa

Swiss-Prot:

Q42551

Purification&Purity:

The antibody was affinity-purified from rabbit antiserum by affinity-chromatography using epitope-specific immunogen and the purity is > 95% (by SDS-PAGE).

Applications:

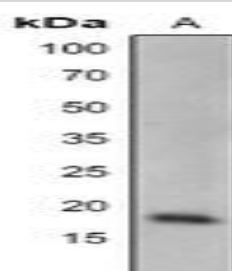
WB (1/500 - 1/2000)

Storage&Stability:

Store at 4 °C short term. Aliquot and store at -20 °C long term. Avoid freeze-thaw cycles.

Specificity:

Recognizes endogenous levels of SCE1 protein.

DATA:

Western blot analysis of SCE1 expression in Arabidopsis thaliana (A) whole cell lysates.

Note:

For research use only, not for use in diagnostic procedure.

Bioworld Technology, Inc.

Add: 1660 South Highway 100, Suite 500 St. Louis Park, MN 55416, USA.

Email: info@bioworld.com

Tel: 6123263284

Fax: 6122933841

Bioworld technology, co. Ltd.

Add: No 9, weidi road Qixia District Nanjing, 210046, P. R. China.

Email: info@biogol.com

Tel: 0086-025-68037686

Fax: 0086-025-68035151