

## ALS2CR8 polyclonal antibody

Catalog: BS67234

Host: Rabbit

Reactivity: Human

### BackGround:

Acts as a transcriptional activator that mediates the calcium- and neuron-selective induction of BDNF exon III transcription. Binds to the consensus calcium-response element CaRE1 5'-CTATTTCGAG-3' sequence.

### Product:

Liquid in 0.42% Potassium phosphate, 0.87% Sodium chloride, pH 7.3, 30% glycerol, and 0.01% sodium azide.

### Molecular Weight:

~ 95 kDa

### Swiss-Prot:

Q8N187

### Purification&Purity:

The antibody was affinity-purified from rabbit antiserum by affinity-chromatography using epitope-specific immunogen and the purity is > 195% (by SDS-PAGE).

### Applications:

WB (1/500 - 1/1000), IHC (1/50 - 1/200)

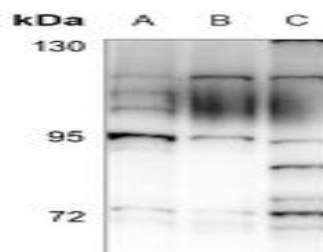
### Storage&Stability:

Store at 4 °C short term. Aliquot and store at -20 °C long term. Avoid freeze-thaw cycles.

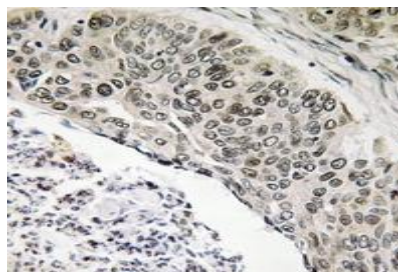
### Specificity:

Recognizes endogenous levels of ALS2CR8 protein.

### DATA:



Western blot analysis of ALS2CR8 expression in THP1 (A), MCF7 (B), HeLa (C) whole cell lysates.



Immunohistochemical analysis of ALS2CR8 staining in human lung cancer formalin fixed paraffin embedded tissue section. The section was pre-treated using heat mediated antigen retrieval with sodium citrate buffer (pH 6.0). The section was then incubated with the antibody at room temperature and detected using an HRP conjugated compact polymer system. DAB was used as the chromogen. The section was then counterstained with haematoxylin and mounted with DPX.

### Note:

For research use only, not for use in diagnostic procedure.

### Bioworld Technology, Inc.

Add: 1660 South Highway 100, Suite 500 St. Louis Park, MN 55416, USA.

Email: [info@bioworld.com](mailto:info@bioworld.com)

Tel: 6123263284

Fax: 6122933841

### Bioworld technology, co. Ltd.

Add: No 9, weidi road Qixia District Nanjing, 210046, P. R. China.

Email: [info@biogot.com](mailto:info@biogot.com)

Tel: 0086-025-68037686

Fax: 0086-025-68035151