

DNA Polymerase lambda polyclonal antibody

Catalog: BS67217

Host: Rabbit

Reactivity: Human

BackGround:

DNA polymerase that functions in several pathways of DNA repair

Involved in base excision repair (BER) responsible for repair of lesions that give rise to abasic (

Also contributes to DNA double-strand break repair by non-homologous end joining and homologous recombination (PubMed:19806195, PubMed:20693240, PubMed:30250067).

Product:

Liquid in 0.42% Potassium phosphate, 0.87% Sodium chloride, pH 7.3, 30% glycerol, and 0.01% sodium azide.

Molecular Weight:

~ 60 kDa

Swiss-Prot:

Q9UGP5

Purification&Purity:

The antibody was affinity-purified from rabbit antiserum by affinity-chromatography using epitope-specific immunogen and the purity is > 178% (by SDS-PAGE).

Applications:

WB (1/500 - 1/1000), IHC (1/50 - 1/200)

Storage&Stability:

Store at 4 °C short term. Aliquot and store at -20 °C long term. Avoid freeze-thaw cycles.

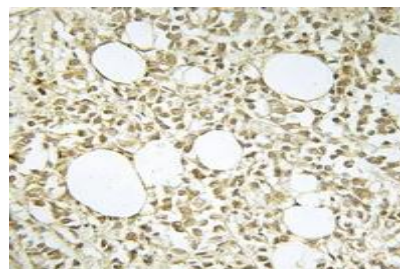
Specificity:

Recognizes endogenous levels of DNA Polymerase lambda protein.

DATA:



Western blot analysis of DNA Polymerase lambda expression in HepG2 (A), SGC7901 (B), Panc1 (C) whole cell lysates.



Immunohistochemical analysis of DNA Polymerase lambda staining in human breast cancer formalin fixed paraffin embedded tissue section. The section was pre-treated using heat mediated antigen retrieval with sodium citrate buffer (pH 6.0). The section was then incubated with the antibody at room temperature and detected using an HRP conjugated compact polymer system. DAB was used as the chromogen. The section was then counterstained with haematoxylin and mounted with DPX.

Note:

For research use only, not for use in diagnostic procedure.

Bioworld Technology, Inc.

Add: 1660 South Highway 100, Suite 500 St. Louis Park, MN 55416, USA.

Email: info@bioworld.com

Tel: 6123263284

Fax: 6122933841

Bioworld technology, co. Ltd.

Add: No 9, weidi road Qixia District Nanjing, 210046, P. R. China.

Email: info@biogot.com

Tel: 0086-025-68037686

Fax: 0086-025-68035151