

## BAP31 polyclonal antibody

Catalog: BS67056

Host: Rabbit

Reactivity: Human, Mouse, Rat

### BackGround:

Functions as a chaperone protein (PubMed:9396746, PubMed:18287538). Is one of the most abundant endoplasmic reticulum (ER) proteins (PubMed:9396746, PubMed:18287538). Plays a role in the export of secreted proteins in the ER, the recognition of abnormally folded protein and their targeting to the ER associated-degradation (ERAD) (PubMed:9396746, PubMed:18287538). Also serves as a cargo receptor for the export of transmembrane proteins (By similarity).

### Product:

Liquid in 0.42% Potassium phosphate, 0.87% Sodium chloride, pH 7.3, 30% glycerol, and 0.01% sodium azide.

### Molecular Weight:

~ 28 kDa

### Swiss-Prot:

P51572

### Purification&Purity:

The antibody was affinity-purified from rabbit antiserum by affinity-chromatography using epitope-specific immunogen and the purity is > 95% (by SDS-PAGE).

### Applications:

WB (1/500 - 1/1000)

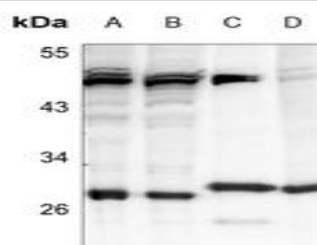
### Storage&Stability:

Store at 4 °C short term. Aliquot and store at -20 °C long term. Avoid freeze-thaw cycles.

### Specificity:

Recognizes endogenous levels of BAP31 protein.

### DATA:



Western blot analysis of BAP31 expression in THP1 (A), HepG2 (B), mouse lung (C), rat spleen (D) whole cell lysates.

### Note:

For research use only, not for use in diagnostic procedure.

### Bioworld Technology, Inc.

Add: 1660 South Highway 100, Suite 500 St. Louis Park, MN 55416, USA.

Email: [info@bioworld.com](mailto:info@bioworld.com)

Tel: 6123263284

Fax: 6122933841

### Bioworld technology, co. Ltd.

Add: No 9, weidi road Qixia District Nanjing, 210046, P. R. China.

Email: [info@biogol.com](mailto:info@biogol.com)

Tel: 0086-025-68037686

Fax: 0086-025-68035151