

ATAT1 polyclonal antibody

Catalog: BS66172

Host: Rabbit

Reactivity: Human, Mouse, Rat

BackGround:

Specifically acetylates 'Lys-40' in alpha-tubulin on the luminal side of microtubules. May affect microtubule stability and regulate microtubule dynamics. May be involved in neuron development.

Product:

0.01M TBS(pH7.4) with 1% BSA, 0.03% Proclin300 and 50% Glycerol.

Molecular Weight:

~ 47 kDa

Swiss-Prot:

Q9H8X5

Purification&Purity:

The antibody was affinity-purified from rabbit antiserum by affinity-chromatography using epitope-specific immunogen and the purity is > 95% (by SDS-PAGE).

Applications:

WB: 1:500~1:2000

IHC: 1:100~1:500

IF: 1:100~1:500

ELISA: 1:5000~1:10000

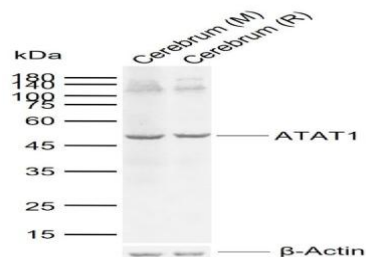
Storage&Stability:

Store at 4 °C short term. Aliquot and store at -20 °C long term. Avoid freeze-thaw cycles.

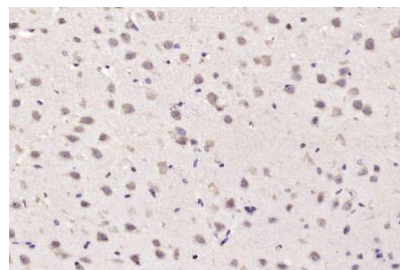
Specificity:

ATAT1 polyclonal antibody detects endogenous levels of ATAT1 protein.

DATA:



Primary: Anti-ATAT1 at 1/1000 dilution



Paraformaldehyde-fixed, paraffin embedded (mouse brain); Antigen retrieval by boiling in sodium citrate buffer (pH6.0) for 15min; Block endogenous peroxidase by 3% hydrogen peroxide for 20 minutes; Blocking buffer (normal goat serum) at 37 °C for 30min; Antibody incubation with (α-TAT) Polyclonal Antibody, Unconjugated at 1:200 overnight at 4 °C.

Note:

For research use only, not for use in diagnostic procedure.

Bioworld Technology, Inc.

Add: 1660 South Highway 100, Suite 500 St. Louis Park, MN 55416, USA.

Email: info@bioworld.com

Tel: 6123263284

Fax: 6122933841

Bioworld technology, co. Ltd.

Add: No 9, weidi road Qixia District Nanjing, 210046, P. R. China.

Email: info@biogot.com

Tel: 0086-025-68037686

Fax: 0086-025-68035151