

## SCXA polyclonal antibody

Catalog: BS66161

Host: Rabbit

Reactivity: Human, Mouse, Rat

**BackGround:**

Plays an early essential role in mesoderm formation, as well as a later role in formation of somite-derived chondrogenic lineages.

**Product:**

Rabbit IgG, 1mg/ml in PBS with 0.02% sodium azide, 50% glycerol, pH7.2

**Molecular Weight:**

~ 22 kDa

**Swiss-Prot:**

Q7RTU7

**Purification&Purity:**

The antibody was affinity-purified from rabbit antiserum by affinity-chromatography using epitope-specific immunogen and the purity is > 95% (by SDS-PAGE).

**Applications:**

ELISA: 1:5000-1:10000

IHC: 1:100-1:500

IF: 1:100-1:500

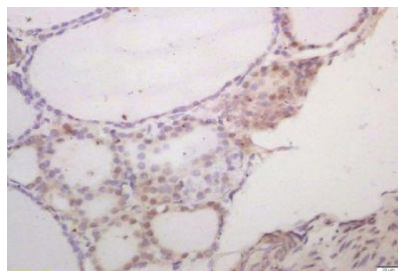
ICC: 1:100-1:500

**Storage&Stability:**

Store at 4 °C short term. Aliquot and store at -20 °C long term. Avoid freeze-thaw cycles.

**Specificity:**

SCXA polyclonal antibody detects endogenous levels of SCXA protein.

**DATA:**

Tissue/cell: rat thyroid gland; 4% Paraformaldehyde-fixed and paraffin-embedded;

Antigen retrieval: citrate buffer (0.01M, pH 6.0), Boiling bathing for 15min; Block endogenous peroxidase by 3% Hydrogen peroxide for 30min; Blocking buffer (normal goat serum) at 37 °C for 20 min;

Incubation: Anti-SCXA Polyclonal Antibody, Unconjugated(bs-12364R) 1:200, overnight at 4 °C.

**Note:**

For research use only, not for use in diagnostic procedure.

**Bioworld Technology, Inc.**

Add: 1660 South Highway 100, Suite 500 St. Louis Park, MN 55416, USA.

Email: [info@bioworld.com](mailto:info@bioworld.com)

Tel: 6123263284

Fax: 6122933841

**Bioworld technology, co. Ltd.**

Add: No 9, weidi road Qixia District Nanjing, 210046, P. R. China.

Email: [info@biogol.com](mailto:info@biogol.com)

Tel: 0086-025-68037686

Fax: 0086-025-68035151