

Mouse anti human collagen IV $\alpha 5$ Chain

Catalog: BS66124

Host: Mouse

Reactivity:

BackGround:

Alport's syndrome, an inherited disease, shows absence or reduction of the $\alpha 5$ chain in the glomerular, tubular and bowman's capsular basement membranes. Normal human kidney has $\alpha 1$ (TV) to $\alpha 6$ (IV) chains in the renal basement membrane.

Product:

Appearance: Solution, Monoclonal antibodies were purified by affinity chromatography. 0.02% ProClin 300 is added for preservation.

Molecular Weight:

Swiss-Prot:

Purification&Purity:

Monoclonal antibodies were prepared by the mouse splenocytes fusion method.

Applications:

WB: 1:500~1:1000

IHC: 1:50~1:200

IF: 1:50~1:200

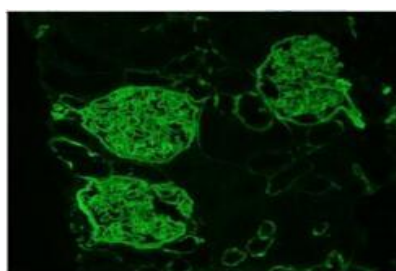
Storage&Stability:

Store at 4 °C.

Specificity:

8A12D2-2 is specific to NC1 domain of $\alpha 1$ (IV).

DATA:



FITC fluorescence $\alpha 5$ chain is observed in the GBM, part of the TBM and Bowman's capsular.

Note:

For research use only, not for use in diagnostic procedure.

Bioworld Technology, Inc.

Add: 1660 South Highway 100, Suite 500 St. Louis Park, MN 55416, USA.

 Email: info@bioworld.com

Tel: 6123263284

Fax: 6122933841

Bioworld technology, co. Ltd.

Add: No 9, weidi road Qixia District Nanjing, 210046, P. R. China.

 Email: info@biogol.com

Tel: 0086-025-68037686

Fax: 0086-025-68035151