

## Mouse anti human collagen IV a3 Chain

Catalog: BS66123

Host: Mouse

Reactivity:

**BackGround:**

Alport's syndrome, an inherited disease, shows absence or reduction of the  $\alpha 5$  chain in the glomerular, tubular and bowman's capsular basement membranes. Normal human kidney has  $\alpha 1$  (TV) to  $\alpha 6$  (IV) chains in the renal basement membrane.

**Product:**

Appearance: Solution, Monoclonal antibodies were purified by affinity chromatography. 0.02% ProClin 300 is added for preservation.

**Molecular Weight:****Swiss-Prot:****Purification&Purity:**

Monoclonal antibodies were prepared by the mouse splenocytes fusion method.

**Applications:**

WB: 1:500~1:1000

IHC: 1:50~1:200

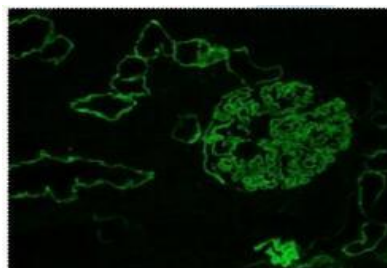
IF: 1:50~1:200

**Storage&Stability:**

Store at 4 °C.

**Specificity:**

18G6-2 (mouse IgG1/kappa) is specific to NC1 domain of  $\alpha 5$  (IV).

**DATA:**

FITC fluorescence  $\alpha 3$  chain is observed in the GBM and part of the TBM.

**Note:**

For research use only, not for use in diagnostic procedure.

**Bioworld Technology, Inc.**

Add: 1660 South Highway 100, Suite 500 St. Louis Park,  
MN 55416, USA.

Email: [info@bioworld.com](mailto:info@bioworld.com)

Tel: 6123263284

Fax: 6122933841

**Bioworld technology, co. Ltd.**

Add: No 9, weidi road Qixia District Nanjing, 210046,  
P. R. China.

Email: [info@biogol.com](mailto:info@biogol.com)

Tel: 0086-025-68037686

Fax: 0086-025-68035151