

**SERPINA12 polyclonal antibody**

|                  |              |   |
|------------------|--------------|---|
| Catalog: BS65978 | Host: Rabbit | Reactivity: Hu-<br>man, Mouse, Rat, Dog, Pig, Cow, Horse, Rabbit, |
|------------------|--------------|---|

**BackGround:**

May modulates insulin action conceivably only in the presence of its yet undefined target proteases in white adipose tissues.

Serpins are the largest and most diverse family of protease inhibitors. Most serpins control proteolytic cascades, certain serpins do not inhibit enzymes, but instead perform diverse functions such as storage (ovalbumin, in egg white), hormone carriage proteins (thyroxine-binding globulin, cortisol-binding globulin) and tumor suppressor genes (maspin). Most inhibitory serpins target chymotrypsin-like serine proteases. These enzymes are defined by the presence of a nucleophilic serine residue in their catalytic site. Some serpins inhibit other classes of protease. A number of such serpins have been shown to target cysteine proteases. These enzymes differ from serine proteases in that they are defined by the presence of a nucleophilic cysteine residue, rather than a serine residue, in their catalytic site.

SerpinA12, also known as OL-64, Visceral adipose tissue-derived serine protease inhibitor, Vaspin, Visceral adipose-specific serpin and SERPINA12, is a secreted protein which belongs to the serpin family. SerpinA12 / Vaspin is expressed in visceral adipose tissues. It may modulates insulin action conceivably only in the presence of its yet undefined target proteases in white adipose tissues. SerpinA12 / Vaspin may be the compensatory molecule in the pathogenesis of metabolic syndrome and SerpinA12 / Vaspin recombinant protein or vaspin-mimicking agents such as vaspin analogs, antibodies or small molecule agents may be the link to drug discovery and development.

**Product:**

0.01M TBS(pH7.4) with 1% BSA, 0.03% Proclin300 and 50% Glycerol.

**Molecular Weight:**

45 kD

**Swiss-Prot:**

Q8IW75

**Purification&Purity:**

affinity purified by Protein A

**Applications:**

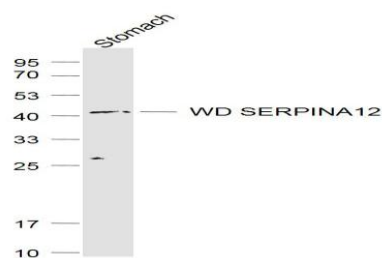
WB=1:500-2000

**Storage&Stability:**

Store at 4 °C short term. Aliquot and store at -20 °C long term. Avoid freeze-thaw cycles.

**Specificity:**

SERPINA12 Polyclonal Antibody detects endogenous levels of SERPINA12 protein.

**DATA:**

Primary: Anti-WD SERPINA12 at 1/1000 dilution

**Note:**

For research use only, not for use in diagnostic procedure.

**Bioworld Technology, Inc.**

Add: 1660 South Highway 100, Suite 500 St. Louis Park, MN 55416, USA.

Email: [info@bioworld.com](mailto:info@bioworld.com)

Tel: 6123263284

Fax: 6122933841

**Bioworld technology, co. Ltd.**

Add: No 9, weidi road Qixia District Nanjing, 210046, P. R. China.

Email: [info@biogot.com](mailto:info@biogot.com)

Tel: 0086-025-68037686

Fax: 0086-025-68035151