

S100P binding protein Polyclonal Antibody

Catalog: BS65956

Host: Rabbit

Reactivity: Human, Mouse, Rat,

BackGround:

S100PBP was originally cloned from a pancreatic epithelial carcinoma library and encodes a predicted 408 amino acid protein. RT-PCR detected S100PBP expression in brain, breast, spleen, and lung, but not in pancreas and liver. GFP-tagged S100PBP localized to nuclei of transfected HeLa cells.

Product:

0.01M TBS(pH7.4) with 1% BSA, 0.03% Proclin300 and 50% Glycerol.

Molecular Weight:

46 kD

Swiss-Prot:

Q96BU1

Purification&Purity:

affinity purified by Protein A

Applications:

WB=1:500-2000 Flow-Cyt=2ug/Test

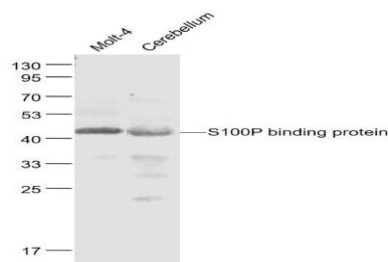
Storage&Stability:

Store at 4 °C short term. Aliquot and store at -20 °C long term. Avoid freeze-thaw cycles.

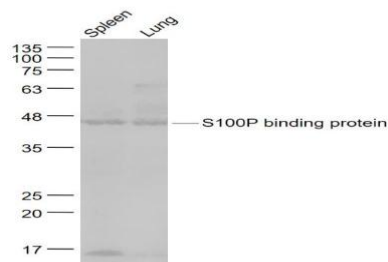
Specificity:

S100P Polyclonal Antibody detects endogenous levels of S100P protein.

DATA:



Primary: Anti- S100P binding protein at 1/1000 dilution



Primary: Anti- S100P binding protein at 1/1000 dilution

Note:

For research use only, not for use in diagnostic procedure.

Bioworld Technology, Inc.

Add: 1660 South Highway 100, Suite 500 St. Louis Park, MN 55416, USA.

 Email: info@bioworld.com

Tel: 6123263284

Fax: 6122933841

Bioworld technology, co. Ltd.

Add: No 9, weidi road Qixia District Nanjing, 210046, P. R. China.

 Email: info@biogot.com

Tel: 0086-025-68037686

Fax: 0086-025-68035151