

ROR beta Polyclonal Antibody

Catalog: BS65943	Host: Rabbit	Reactivity: Hu- man, Mouse, Rat, Dog, Cow, Horse, Sheep,
------------------	--------------	--

BackGround:

ROR beta is a member of the NR1 subfamily of nuclear hormone receptors. It is a DNA-binding protein that can bind as a monomer or as a homodimer to hormone response elements upstream of several genes to enhance the expression of those genes. The specific functions of this protein are not known, but it has been shown to interact with NM23-2, a nucleoside diphosphate kinase involved in organogenesis and differentiation.

Product:

0.01M TBS(pH7.4) with 1% BSA, 0.03% Proclin300 and 50% Glycerol.

Molecular Weight:

53 kD

Swiss-Prot:

Q92753

Purification&Purity:

affinity purified by Protein A

Applications:

WB=1:500-2000

Storage&Stability:

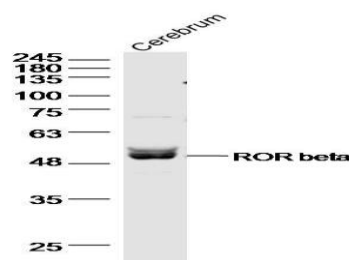
Store at 4 °C short term. Aliquot and store at -20 °C long term. Avoid freeze-thaw cycles.

Specificity:

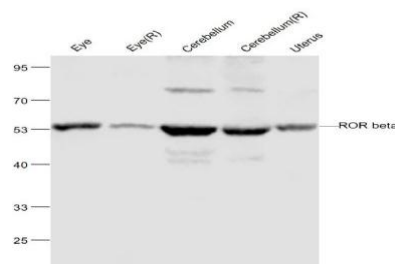
ROR beta Polyclonal Antibody detects endogenous levels

of ROR beta protein.

DATA:



Primary: Anti- ROR beta at 1/500 dilution



Primary: Anti-ROR beta at 1/1000 dilution

Note:

For research use only, not for use in diagnostic procedure.

Bioworld Technology, Inc.

Add: 1660 South Highway 100, Suite 500 St. Louis Park, MN 55416, USA.

Email: info@bioworld.com

Tel: 6123263284

Fax: 6122933841

Bioworld technology, co. Ltd.

Add: No 9, weidi road Qixia District Nanjing, 210046, P. R. China.

Email: info@biogol.com

Tel: 0086-025-68037686

Fax: 0086-025-68035151