

Aminoacylase 1 Polyclonal Antibody

Catalog: BS65936	Host: Rabbit	Reactivity: Human, Mouse, Rat, Pig, Cow, Horse,
------------------	--------------	---

BackGround:

Aminoacylase 1 is a cytosolic, homodimeric, zinc binding enzyme that catalyzes the hydrolysis of acylated L amino acids to L amino acids and acyl group, and has been postulated to function in the catabolism and salvage of acylated amino acids. ACY1 has been assigned to chromosome 3p21.1, a region reduced to homozygosity in small cell lung cancer (SCLC), and its expression has been reported to be reduced or undetectable in SCLC cell lines and tumors. The amino acid sequence of human aminoacylase 1 is highly homologous to the porcine counterpart, and ACY1 is the first member of a new family of zinc binding enzymes.

Product:

0.01M TBS(pH7.4) with 1% BSA, 0.03% Proclin300 and 50% Glycerol.

Molecular Weight:

46 kD

Swiss-Prot:

Q03154

Purification&Purity:

affinity purified by Protein A

Applications:

WB=1:500-2000

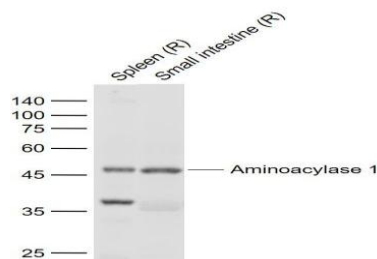
Storage&Stability:

Store at 4 °C short term. Aliquot and store at -20 °C long term. Avoid freeze-thaw cycles.

Specificity:

Aminoacylase 1 Polyclonal Antibody detects endogenous levels of Aminoacylase 1 protein.

DATA:



Primary: Anti-Aminoacylase 1 at 1/1000 dilution

Note:

For research use only, not for use in diagnostic procedure.

Bioworld Technology, Inc.

Add: 1660 South Highway 100, Suite 500 St. Louis Park, MN 55416, USA.

Email: info@bioworld.com

Tel: 6123263284

Fax: 6122933841

Bioworld technology, co. Ltd.

Add: No 9, weidi road Qixia District Nanjing, 210046, P. R. China.

Email: info@biogot.com

Tel: 0086-025-68037686

Fax: 0086-025-68035151