

PPP2R3 Polyclonal Antibody

Catalog: BS65920	Host: Rabbit	Reactivity: Hu- man, Mouse, Rat, Dog, Horse, Rabbit,
------------------	--------------	---------------------------------------------------------

BackGround:

Protein phosphatase 2 (formerly named type 2A) is one of the four major Ser/Thr phosphatases and is implicated in the negative control of cell growth and division. The B regulatory subunit might modulate substrate selectivity and catalytic activity, and also might direct the localization of the catalytic enzyme to a particular subcellular compartment.

Product:

0.01M TBS(pH7.4) with 1% BSA, 0.03% Proclin300 and 50% Glycerol.

Molecular Weight:

130 kD

Swiss-Prot:

Q06190

Purification&Purity:

affinity purified by Protein A

Applications:

WB=1:500-2000

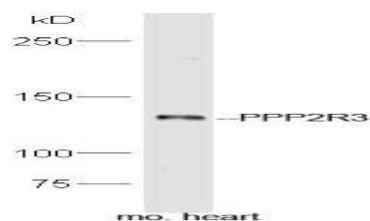
Storage&Stability:

Store at 4 °C short term. Aliquot and store at -20 °C long term. Avoid freeze-thaw cycles.

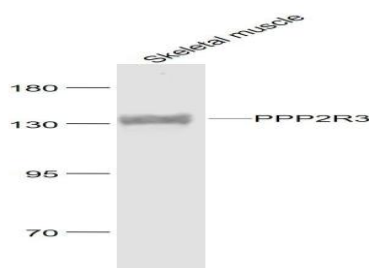
Specificity:

PPP2R3 Polyclonal Antibody detects endogenous levels of PPP2R3 protein.

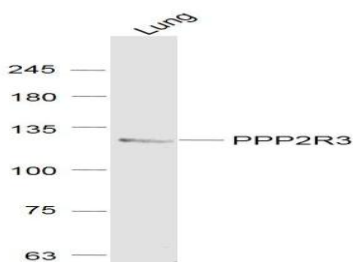
DATA:



Primary: Anti-PPP2R3 at 1/300 dilution



Primary: Anti- PPP2R3 at 1/1000 dilution



Primary: Anti- PPP2R3 at 1/1000 dilution

Note:

For research use only, not for use in diagnostic procedure.

Bioworld Technology, Inc.

Add: 1660 South Highway 100, Suite 500 St. Louis Park, MN 55416, USA.

Email: info@bioworld.com

Tel: 6123263284

Fax: 6122933841

Bioworld technology, co. Ltd.

Add: No 9, weidi road Qixia District Nanjing, 210046, P. R. China.

Email: info@biogot.com

Tel: 0086-025-68037686

Fax: 0086-025-68035151