

ASB10 Polyclonal Antibody

Catalog: BS65895	Host: Rabbit	Reactivity: Hu- man, Mouse, Rat, Dog, Pig, Cow, Horse, Rabbit,
------------------	--------------	---

BackGround:

ASB10 is a member of the ankyrin repeat and SOCS box-containing (ASB) family of proteins. SOCS boxes are carboxy terminal regions of homology found in the suppressor of cytokine signaling (SOCS) family of proteins. The box region is thought to be the point of interaction between SOCS proteins and E3 ubiquitin ligases. The SOCS box couples the suppressor of cytokine signalling proteins and their binding partners with the elongin B and C complex, possibly targeting them for degradation.

Product:

0.01M TBS(pH7.4) with 1% BSA, 0.03% Proclin300 and 50% Glycerol.

Molecular Weight:

51 kDa

Swiss-Prot:

Q8WXI3

Purification&Purity:

affinity purified by Protein A

Applications:

WB=1:500-2000

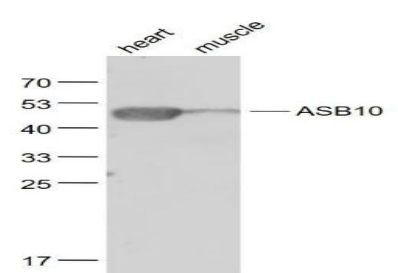
Storage&Stability:

Store at 4 °C short term. Aliquot and store at -20 °C long term. Avoid freeze-thaw cycles.

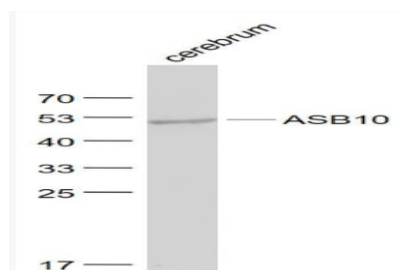
Specificity:

ASB10 Polyclonal Antibody detects endogenous levels of ASB10 protein.

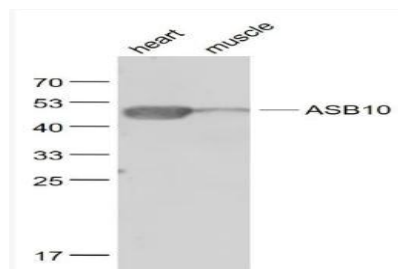
DATA:



Primary: Anti- ASB10 at 1/1000 dilution



Primary: Anti- ASB10 at 1/1000 dilution



Primary: Anti- ASB10 at 1/1000 dilution

Note:

For research use only, not for use in diagnostic procedure.

Bioworld Technology, Inc.

Add: 1660 South Highway 100, Suite 500 St. Louis Park, MN 55416, USA.

Email: info@bioworld.com

Tel: 6123263284

Fax: 6122933841

Bioworld technology, co. Ltd.

Add: No 9, weidi road Qixia District Nanjing, 210046, P. R. China.

Email: info@biogot.com

Tel: 0086-025-68037686

Fax: 0086-025-68035151