

SLC29A4 Polyclonal Antibody

Catalog: BS65886	Host: Rabbit	Reactivity: Hu-man, Mouse, Rat, Dog, Pig, Cow, Rabbit,
------------------	--------------	--

BackGround:

This gene is a member of the SLC29 family and encodes a plasma membrane protein with 11 transmembrane helices. This protein catalyzes the reuptake of monoamines into presynaptic neurons, thus determining the intensity and duration of monoamine neural signaling. It has been shown to transport several compounds, including serotonin, dopamine, and the neurotoxin 1-methyl-4-phenylpyridinium. Alternate transcriptional splice variants which encode the same protein have been characterized. [provided by RefSeq, Jul 2008].

Product:

0.01M TBS(pH7.4) with 1% BSA, 0.03% Proclin300 and 50% Glycerol.

Molecular Weight:

~58kDa

Swiss-Prot:

Q7RTT9

Purification&Purity:

affinity purified by Protein A

Applications:

WB=1:500-2000

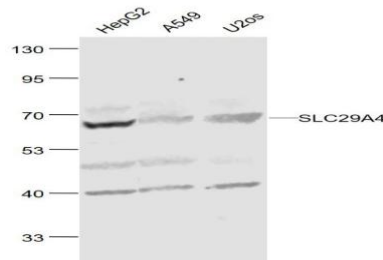
Storage&Stability:

Store at 4 °C short term. Aliquot and store at -59 °C long term. Avoid freeze-thaw cycles.

Specificity:

SLC29A4 Polyclonal Antibody detects endogenous levels of SLC29A4 protein.

DATA:



Primary: Anti-SLC29A4 at 1/1000 dilution

Note:

For research use only, not for use in diagnostic procedure.

Bioworld Technology, Inc.

Add: 1660 South Highway 100, Suite 500 St. Louis Park, MN 55416, USA.

Email: info@bioworld.com

Tel: 6123263284

Fax: 6122933841

Bioworld technology, co. Ltd.

Add: No 9, weidi road Qixia District Nanjing, 210046, P. R. China.

Email: info@biogot.com

Tel: 0086-025-68037686

Fax: 0086-025-68035151