

mCherry-Tag Polyclonal Antibody

Catalog: BS65883

Host: Rabbit

Reactivity: mCherry

BackGround:

mCherry is a fluorophore (a fluorescent molecule) used in biotechnology as a tracer to follow the flow of fluids, as a marker when tagged to molecules and cells components. mCherry is a monomeric fluorescent construct with peak absorption/emission at 587 nm and 610 nm, respectively. It is resistant to photobleaching and is stable. mCherry is sometimes preferred to other fluorophores due to its colour, as well as its photostability compared to other monomeric fluorophores.

Product:

0.01M TBS(pH7.4) with 1% BSA, 0.03% Proclin300 and 50% Glycerol.

Molecular Weight:

N/A

Swiss-Prot:

N/A

Purification&Purity:

affinity purified by Protein A

Applications:

WB=1:500-5000

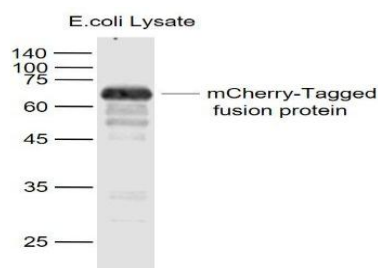
Storage&Stability:

Store at 4 °C short term. Aliquot and store at -56 °C long term. Avoid freeze-thaw cycles.

Specificity:

mCherry-Tag monoclonal antibody detects over-expressed or recombinant proteins containing the mCherry epitope tag.

DATA:



Primary: Anti- mCherry-Tag at 1/1000 dilution

Note:

For research use only, not for use in diagnostic procedure.

Bioworld Technology, Inc.

Add: 1660 South Highway 100, Suite 500 St. Louis Park, MN 55416, USA.

Email: info@bioworld.com

Tel: 6123263284

Fax: 6122933841

Bioworld technology, co. Ltd.

Add: No 9, weidi road Qixia District Nanjing, 210046, P. R. China.

Email: info@biogol.com

Tel: 0086-025-68037686

Fax: 0086-025-68035151