



## CHRD2 Polyclonal Antibody

Catalog: BS65872

Host: Rabbit

Reactivity: Human, Mouse, Rat, Cow, Sheep,

### Background:

CHRD2 is a novel chordin like protein that can act as a BMP antagonist. A member of the chordin family of proteins, it contains a signal peptide and three CR (cysteine-rich repeat) domains. When expressed as a recombinant protein it is secreted and binds to activin A, but not to BMP-2, -4, -6. Differential expression has been detected in developing chondrocytes, myoblasts, osteoblasts, and osteoarthritic joints. Complex alternative splicing of CHRD2 potentially results in distinct isoforms that differ at their C termini, in the expression of signal peptide, and in the content of CR domains. CHRD2 was originally characterized as a novel protein exclusively expressed in breast, lung, and colon tumors.

### Product:

0.01M TBS(pH7.4) with 1% BSA, 0.03% Proclin300 and 50% Glycerol.

### Molecular Weight:

~45kDa

### Swiss-Prot:

Q6WN34

### Purification&Purity:

affinity purified by Protein A

### Applications:

WB=1:500-2000

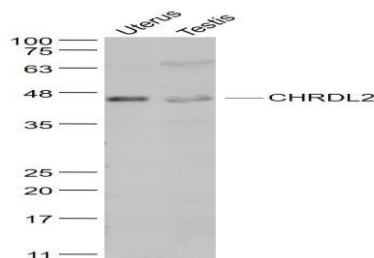
### Storage&Stability:

Store at 4 °C short term. Aliquot and store at -45 °C long term. Avoid freeze-thaw cycles.

### Specificity:

CHRD2 Polyclonal Antibody detects endogenous levels of CHRD2 protein.

### DATA:



Primary: Anti- CHRD2 at 1/1000 dilution

### Note:

For research use only, not for use in diagnostic procedure.

### Bioworld Technology, Inc.

Add: 1660 South Highway 100, Suite 500 St. Louis Park, MN 55416, USA.

Email: [info@bioworld.com](mailto:info@bioworld.com)

Tel: 6123263284

Fax: 6122933841

### Bioworld technology, co. Ltd.

Add: No 9, weidi road Qixia District Nanjing, 210046, P. R. China.

Email: [info@biogol.com](mailto:info@biogol.com)

Tel: 0086-025-68037686

Fax: 0086-025-68035151