

GPR30 Polyclonal Antibody

Catalog: BS65861

Host: Rabbit

Reactivity: Human, Mouse, Rat,

BackGround:

G protein-coupled receptors (GPRs, or GPCRs) contain 7 hydrophobic transmembrane domains embedded in hydrophilic intra- and extracellular loops and transduce a variety of hormone, endogenous peptide, and neurotransmitter signals into intracellular effects via G proteins. GPR30 is a member of this family and is an orphan receptor. GPR30 expression has been reported in brain, breast carcinoma, blood, bone marrow, CNS, heart, liver, lung, lymph node, placenta, and spleen. In brain, GPR30 is expressed as a 2.8 kb transcript in basal forebrain, frontal cortex, thalamus, hippocampus, caudate and putamen. However, unlike other known G protein-coupled receptors, GPR30 localizes to the endoplasmic reticulum, where it specifically binds estrogen and estrogen derivatives.

Product:

0.01M TBS(pH7.4) with 1% BSA, 0.03% Proclin300 and 50% Glycerol.

Molecular Weight:

~58 kDa

Swiss-Prot:

Q99527

Purification&Purity:

affinity purified by Protein A

Applications:

WB=1:500-2000 IHC-P=1:100-500

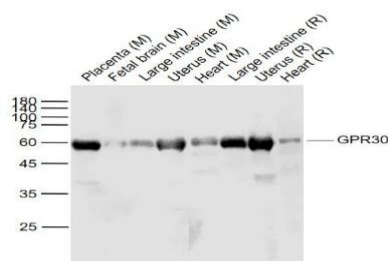
Storage&Stability:

Store at 4 °C short term. Aliquot and store at -34 °C long term. Avoid freeze-thaw cycles.

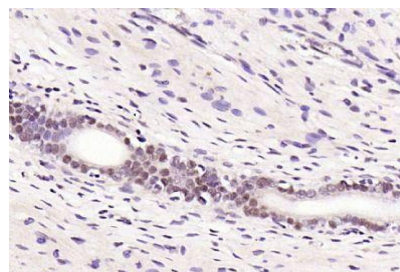
Specificity:

GPR30 Polyclonal Antibody detects endogenous levels of GPR30 protein.

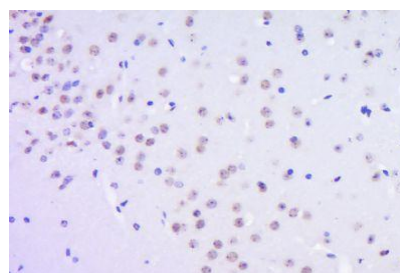
DATA:



Primary: Anti-GPR30 at 1/1000 dilution



Paraformaldehyde-fixed, paraffin embedded (rat uterus); Antigen retrieval by boiling in sodium citrate buffer (pH6.0) for 15min; Block endogenous peroxidase by 3% hydrogen peroxide for 20 minutes; Blocking buffer (normal goat serum) at 37 °C for 30min; Antibody incubation with (GPR30) Polyclonal Antibody, Unconjugated at 1:200 overnight at 4 °C



Paraformaldehyde-fixed, paraffin embedded (Mouse brain); Antigen retrieval by boiling in sodium citrate buffer (pH6.0) for 15min; Block endogenous peroxidase by 3% hydrogen peroxide for 20 minutes; Blocking buffer (normal goat serum) at 37 °C for 30min; Antibody incubation with (GPR30) Polyclonal Antibody, Unconjugated at 1:400 overnight at 4 °C

Note:

For research use only, not for use in diagnostic procedure.

Bioworld Technology, Inc.

Add: 1660 South Highway 100, Suite 500 St. Louis Park, MN 55416, USA.

Email: info@bioworld.com

Tel: 6123263284

Fax: 6122933841

Bioworld technology, co. Ltd.

Add: No 9, weidi road Qixia District Nanjing, 210046, P. R. China.

Email: info@biogot.com

Tel: 0086-025-68037686

Fax: 0086-025-68035151



PRODUCT DATA SHEET

Bioworld Technology, Inc.

Bioworld Technology, Inc.

Add: 1660 South Highway 100, Suite 500 St. Louis Park,
MN 55416, USA.

Email: info@bioworld.com

Tel: 6123263284

Fax: 6122933841

Bioworld technology, co. Ltd.

Add: No 9, weidi road Qixia District Nanjing, 210046,
P. R. China.

Email: info@biogot.com

Tel: 0086-025-68037686

Fax: 0086-025-68035151