

Lipoprotein lipase Polyclonal Antibody

Catalog: BS65851	Host: Rabbit	Reactivity: Hu- man, Mouse, Rat, Pig, Cow, Rabbit, Sheep, Guinea Pig,
------------------	--------------	---

BackGround:

Lipoprotein lipase (LPL) is the central enzyme in plasma triglyceride hydrolysis and is secreted by macrophages in the subendothelial space. Evidence has been provided that LPL produced by macrophages in the vessel wall exerts proatherogenic effects. The atherogenic effects of LPL have been mainly attributed to its ability to favor lipid accumulation within macrophages present in the atherosclerotic lesion. Recently, it has also been shown that LPL promote the development of atherosclerosis through facilitation of monocyte adhesion to endothelial cells, stimulation of tumor necrosis factor alpha (TNF) secretion and induction of vascular smooth muscle cell proliferation.

Product:

0.01M TBS(pH7.4) with 1% BSA, 0.03% Proclin300 and 50% Glycerol.

Molecular Weight:

~55kDa

Swiss-Prot:

P06858

Purification&Purity:

affinity purified by Protein A

Applications:

WB=1:500-2000

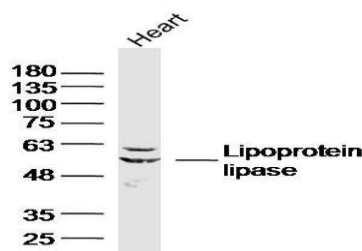
Storage&Stability:

Store at 4 °C short term. Aliquot and store at -24 °C long term. Avoid freeze-thaw cycles.

Specificity:

Lipoprotein lipase Polyclonal Antibody detects endogenous levels of Lipoprotein lipase protein.

DATA:



Primary: Anti-Lipoprotein lipase at 1/300 dilution

Note:

For research use only, not for use in diagnostic procedure.

Bioworld Technology, Inc.

Add: 1660 South Highway 100, Suite 500 St. Louis Park, MN 55416, USA.

Email: info@bioworld.com

Tel: 6123263284

Fax: 6122933841

Bioworld technology, co. Ltd.

Add: No 9, weidi road Qixia District Nanjing, 210046, P. R. China.

Email: info@biogot.com

Tel: 0086-025-68037686

Fax: 0086-025-68035151