

SLC10A1 Polyclonal Antibody

Catalog: BS65848	Host: Rabbit	Reactivity: Hu-man, Mouse, Rat, Dog, Horse, Rabbit,
------------------	--------------	---

BackGround:

Sodium/bile acid cotransporters are integral membrane glycoproteins that participate in the enterohepatic circulation of bile acids. Two homologous transporters are involved in the reabsorption of bile acids, one absorbing from the intestinal lumen, the bile duct, and the kidney with an apical localization (SLC10A2; MIM 601295), and the other being found in the basolateral membranes of hepatocytes (SLC10A1). [supplied by OMIM]

Product:

0.01M TBS (pH 7.4) with 1% BSA, 0.03% Proclin300 and 50% Glycerol.

Molecular Weight:

~38kDa

Swiss-Prot:

Q14973

Purification&Purity:

affinity purified by Protein A

Applications:

ICC=1:100-500

Storage&Stability:

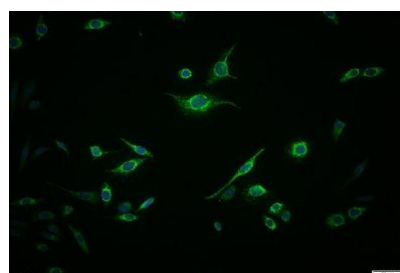
Store at 4 °C short term. Aliquot and store at -21 °C long

term. Avoid freeze-thaw cycles.

Specificity:

SLC10A1 Polyclonal Antibody detects endogenous levels of SLC10A1 protein.

DATA:



Tissue/cell: SiHa cell; 4% Paraformaldehyde-fixed; Triton X-100 at room temperature for 20 min; Blocking buffer (normal goat serum, C-0005) at 37 °C for 20 min; Antibody incubation with (SLC10A1) Polyclonal Antibody, Unconjugated 1:200, 90 minutes at 37 °C; followed by a conjugated Goat Anti-Rabbit IgG antibody at 37 °C for 90 minutes, DAPI (5ug/ml, blue, C-0033) was used to stain the cell nuclei.

Note:

For research use only, not for use in diagnostic procedure.

Bioworld Technology, Inc.

Add: 1660 South Highway 100, Suite 500 St. Louis Park, MN 55416, USA.

Email: info@bioworld.com

Tel: 6123263284

Fax: 6122933841

Bioworld technology, co. Ltd.

Add: No 9, weidi road Qixia District Nanjing, 210046, P. R. China.

Email: info@biogot.com

Tel: 0086-025-68037686

Fax: 0086-025-68035151