

SAPS1 Polyclonal Antibody

| | | |
|------------------|--------------|---|
| Catalog: BS65839 | Host: Rabbit | Reactivity: Hu-man, Mouse, Rat, Dog, Pig, Cow, Horse, Rabbit, Rhesus monkey, Gorilla, Orangutan |
|------------------|--------------|---|

BackGround:

Protein phosphatase regulatory subunits, such as SAPS1, modulate the activity of protein phosphatase catalytic subunits by restricting substrate specificity, recruiting substrates, and determining the intracellular localization of the holoenzyme. SAPS1 is a regulatory subunit for the protein phosphatase-6 catalytic subunit (PPP6C; MIM 612725) (Stefansson and Brautigan, 2006 [PubMed 16769727]). [supplied by OMIM, Nov 2010]

Product:

0.01M TBS(pH7.4) with 1% BSA, 0.03% Proclin300 and 50% Glycerol.

Molecular Weight:

~120 kDa

Swiss-Prot:

Q9UPN7

Purification&Purity:

affinity purified by Protein A

Applications:

WB=1:500-2000

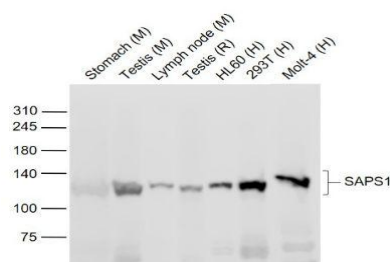
Storage&Stability:

Store at 4 °C short term. Aliquot and store at -12 °C long term. Avoid freeze-thaw cycles.

Specificity:

SAPS1 Polyclonal Antibody detects endogenous levels of SAPS1 protein.

DATA:



Primary: Anti-SAPS1 at 1/1000 dilution

Note:

For research use only, not for use in diagnostic procedure.

Bioworld Technology, Inc.

Add: 1660 South Highway 100, Suite 500 St. Louis Park, MN 55416, USA.

Email: info@bioworld.com

Tel: 6123263284

Fax: 6122933841

Bioworld technology, co. Ltd.

Add: No 9, weidi road Qixia District Nanjing, 210046, P. R. China.

Email: info@biogot.com

Tel: 0086-025-68037686

Fax: 0086-025-68035151