



S1P/Subtilisin Polyclonal Antibody

Catalog: BS65838 Host: Rabbit Reactivity: Human, Mouse, Rat, Chicken, Rabbit,

BackGround:

This gene encodes a member of the subtilisin-like pro-protein convertase family, which includes proteases that process protein and peptide precursors trafficking through regulated or constitutive branches of the secretory pathway. The encoded protein undergoes an initial autocatalytic processing event in the ER to generate a heterodimer which exits the ER and sorts to the cis/medial-Golgi where a second autocatalytic event takes place and the catalytic activity is acquired. It encodes a type 1 membrane bound protease which is ubiquitously expressed and regulates cholesterol or lipid homeostasis via cleavage of substrates at non-basic residues. Mutations in this gene may be associated with lysosomal dysfunction. [provided by RefSeq, Feb 2014]

Product:

0.01M TBS(pH7.4) with 1% BSA, 0.03% Proclin300 and 50% Glycerol.

Molecular Weight:

~126 kDa

Swiss-Prot:

Q14703

Purification&Purity:

affinity purified by Protein A

Applications:

WB=1:500-2000

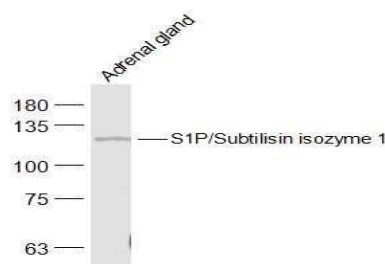
Storage&Stability:

Store at 4 °C short term. Aliquot and store at -11 °C long term. Avoid freeze-thaw cycles.

Specificity:

S1P/Subtilisin Polyclonal Antibody detects endogenous levels of S1P/Subtilisin protein.

DATA:



Primary: Anti-S1P/Subtilisin isozyme 1 at 1/500 dilution

Note:

For research use only, not for use in diagnostic procedure.

Bioworld Technology, Inc.

Add: 1660 South Highway 100, Suite 500 St. Louis Park, MN 55416, USA.

Email: info@bioworld.com

Tel: 6123263284

Fax: 6122933841

Bioworld technology, co. Ltd.

Add: No 9, weidi road Qixia District Nanjing, 210046, P. R. China.

Email: info@biogol.com

Tel: 0086-025-68037686

Fax: 0086-025-68035151