

## ZFPL1 Polyclonal Antibody

Catalog: BS65830	Host: Rabbit	Reactivity: Hu- man, Mouse, Rat, Pig, Cow, Horse, Rabbit, Sheep,
------------------	--------------	--

### BackGround:

Zinc finger protein-like 1 is a 310 amino acid single-pass membrane protein with two zinc fingers at the N-terminus, the second of which is likely a RING domain. The RING domain, which is a 40-60 amino acid, cysteine-rich domain that binds two atoms of zinc, plays a key role in the ubiquitination pathway. The presence of zinc finger-like and leucine zipper-like domains in ZFPL1 suggests a role in DNA binding and transcriptional regulation. ZFP1 is widely expressed in the golgi apparatus and is involved in maintaining golgi structure and regulating the rate of cargo transport.

### Product:

0.01M TBS(pH7.4) with 1% BSA, 0.03% Proclin300 and 50% Glycerol.

### Molecular Weight:

~34kDa

### Swiss-Prot:

O95159

### Purification&Purity:

affinity purified by Protein A

### Applications:

IHC-P=1:100-500

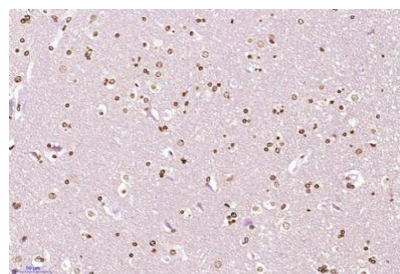
### Storage&Stability:

Store at 4 °C short term. Aliquot and store at -3 °C long term. Avoid freeze-thaw cycles.

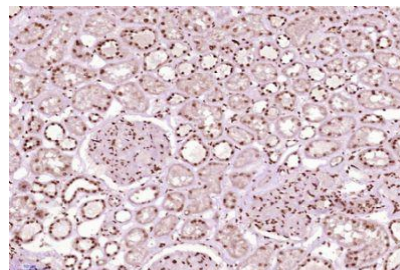
### Specificity:

ZFPL1 Polyclonal Antibody detects endogenous levels of ZFPL1 protein.

### DATA:



Paraformaldehyde-fixed, paraffin embedded (Human brain glioma); Antigen retrieval by boiling in sodium citrate buffer (pH6.0) for 15min; Block endogenous peroxidase by 3% hydrogen peroxide for 20 minutes; Blocking buffer (normal goat serum) at 37 °C for 30min; Antibody incubation with (ZFPL1) Polyclonal Antibody, Unconjugated at 1:400 overnight at 4 °C,



Paraformaldehyde-fixed, paraffin embedded (Human kidney); Antigen retrieval by boiling in sodium citrate buffer (pH6.0) for 15min; Block endogenous peroxidase by 3% hydrogen peroxide for 20 minutes; Blocking buffer (normal goat serum) at 37 °C for 30min; Antibody incubation with (ZFPL1) Polyclonal Antibody, Unconjugated(bs-19136R) at 1:400 overnight at 4 °C

### Note:

For research use only, not for use in diagnostic procedure.

### Bioworld Technology, Inc.

Add: 1660 South Highway 100, Suite 500 St. Louis Park, MN 55416, USA.

Email: [info@bioworld.com](mailto:info@bioworld.com)

Tel: 6123263284

Fax: 6122933841

### Bioworld technology, co. Ltd.

Add: No 9, weidi road Qixia District Nanjing, 210046, P. R. China.

Email: [info@biogot.com](mailto:info@biogot.com)

Tel: 0086-025-68037686

Fax: 0086-025-68035151