

Mutarotase Polyclonal Antibody

Catalog: BS65829	Host: Rabbit	Reactivity: Hu- man, Mouse, Rat, Dog, Pig, Cow, Horse, Sheep,
------------------	--------------	--

BackGround:

This gene encodes an enzyme that catalyzes the epimerization of hexose sugars such as glucose and galactose. The encoded protein is expressed in the cytoplasm and has a preference for galactose. The encoded protein may be required for normal galactose metabolism by maintaining the equilibrium of alpha and beta anomers of galactose.[provided by RefSeq, Mar 2009]

Product:

0.01M TBS(pH7.4) with 1% BSA, 0.03% Proclin300 and 50% Glycerol.

Molecular Weight:

~38 kDa

Swiss-Prot:

Q96C23

Purification&Purity:

affinity purified by Protein A

Applications:

WB=1:500-2000

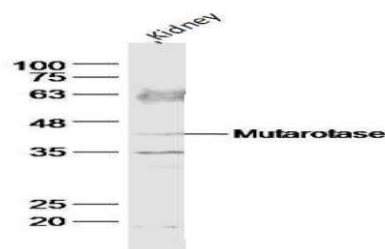
Storage&Stability:

Store at 4 °C short term. Aliquot and store at -2 °C long term. Avoid freeze-thaw cycles.

Specificity:

Mutarotase Polyclonal Antibody detects endogenous levels of Mutarotase protein.

DATA:



Primary: Anti-Mutarotase at 1/1000 dilution

Note:

For research use only, not for use in diagnostic procedure.

Bioworld Technology, Inc.

Add: 1660 South Highway 100, Suite 500 St. Louis Park, MN 55416, USA.

Email: info@bioworld.com

Tel: 6123263284

Fax: 6122933841

Bioworld technology, co. Ltd.

Add: No 9, weidi road Qixia District Nanjing, 210046, P. R. China.

Email: info@biogol.com

Tel: 0086-025-68037686

Fax: 0086-025-68035151