

ZCCHC5 Polyclonal Antibody

Catalog: BS65819

Host: Rabbit

Reactivity: Human,

BackGround:

This gene is a member of a family of gag-related retrotransposon genes. These genes appear to have lost the ability to retrotranspose; however, their open reading frames have remained intact, which may indicate that these genes have acquired new functions in the cell. [provided by RefSeq, Nov 2009]

Product:

0.01M TBS(pH7.4) with 1% BSA, 0.03% Proclin300 and 50% Glycerol.

Molecular Weight:

~53 kDa

Swiss-Prot:

Q8N8U3

Purification&Purity:

affinity purified by Protein A

Applications:

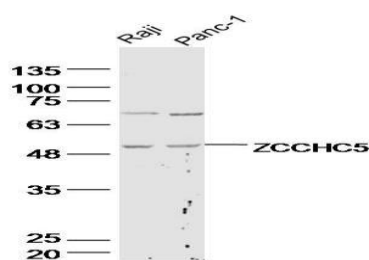
WB=1:500-2000

Storage&Stability:

Store at 4 °C short term. Aliquot and store at -8 °C long term. Avoid freeze-thaw cycles.

Specificity:

ZCCHC5 Polyclonal Antibody detects endogenous levels of ZCCHC5 protein.

DATA:

Primary: Anti-ZCCHC5 at 1/300 dilution

Note:

For research use only, not for use in diagnostic procedure.

Bioworld Technology, Inc.

Add: 1660 South Highway 100, Suite 500 St. Louis Park, MN 55416, USA.

Email: info@bioworld.com

Tel: 6123263284

Fax: 6122933841

Bioworld technology, co. Ltd.

Add: No 9, weidi road Qixia District Nanjing, 210046, P. R. China.

Email: info@biogol.com

Tel: 0086-025-68037686

Fax: 0086-025-68035151