

LW1/HSFX1 Polyclonal Antibody

Catalog: BS65815

Host: Rabbit

Reactivity: Human,

BackGround:

HSFX1 (heat shock transcription factor family, X linked 1), also known as LW-1, is a 423 amino acid protein that is predominately expressed in testis. Localized to the cytoplasm, HSFX1 is thought to be involved in spermatogenesis and male fertility.

Product:

0.01M TBS(pH7.4) with 1% BSA, 0.03% Proclin300 and 50% Glycerol.

Molecular Weight:

~45 kDa

Swiss-Prot:

Q9UBD0

Purification&Purity:

affinity purified by Protein A

Applications:

IHC-P=1:100-500

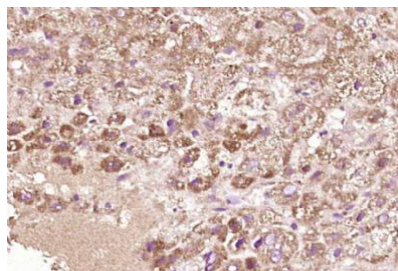
Storage&Stability:

Store at 4 °C short term. Aliquot and store at -12 °C long term. Avoid freeze-thaw cycles.

Specificity:

LW1/HSFX1 Polyclonal Antibody detects endogenous levels of LW1/HSFX1 protein.

DATA:



Paraformaldehyde-fixed, paraffin embedded (Human liver carcinoma); Antigen retrieval by boiling in sodium citrate buffer (pH6.0) for 15min; Block endogenous peroxidase by 3% hydrogen peroxide for 20 minutes; Blocking buffer (normal goat serum) at 37 °C for 30min; Antibody incubation with (HSFX1) Polyclonal Antibody, Unconjugated at 1:400 overnight at 4 °C

Note:

For research use only, not for use in diagnostic procedure.

Bioworld Technology, Inc.

Add: 1660 South Highway 100, Suite 500 St. Louis Park, MN 55416, USA.

Email: info@bioworld.com

Tel: 6123263284

Fax: 6122933841

Bioworld technology, co. Ltd.

Add: No 9, weidi road Qixia District Nanjing, 210046, P. R. China.

Email: info@biogol.com

Tel: 0086-025-68037686

Fax: 0086-025-68035151