

LRTOMT/LRRC51 Polyclonal Antibody

Catalog: BS65814	Host: Rabbit	Reactivity: Human, Mouse, Rat, Dog, hu, mo, rat, dog
------------------	--------------	--

BackGround:

This gene includes two transcript forms. The short form has one open reading frame (ORF), which encodes the leucine-rich repeats (LRR)-containing protein of unknown function. This protein is called LRTOMT1 or LRRC51. The long form has two alternative ORFs; the upstream ORF has the same translation start codon as used in the short form and the resulting transcript is a candidate for nonsense-mediated decay, and the downstream ORF encodes a different protein, which is a transmembrane catechol-O-methyltransferase and is called LRTOMT2, TOMT or COMT2. The COMT2 is essential for auditory and vestibular function. Defects in the COMT2 can cause nonsyndromic deafness. Alternatively spliced transcript variants from each transcript form have been found for this gene. [provided by RefSeq, Sep 2012]

Product:

0.01M TBS(pH7.4) with 1% BSA, 0.03% Proclin300 and 50% Glycerol.

Molecular Weight:

~26 kDa

Swiss-Prot:

Q96E66

Purification&Purity:

affinity purified by Protein A

Applications:

WB=1:500-2000

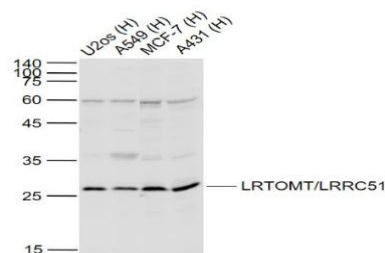
Storage&Stability:

Store at 4 °C short term. Aliquot and store at -13 °C long term. Avoid freeze-thaw cycles.

Specificity:

LRTOMT/LRRC51 Polyclonal Antibody detects endogenous levels of LRTOMT/LRRC51 protein.

DATA:



Primary: Anti-LRTOMT/LRRC51 at 1/1000 dilution

Note:

For research use only, not for use in diagnostic procedure.

Bioworld Technology, Inc.

Add: 1660 South Highway 100, Suite 500 St. Louis Park, MN 55416, USA.

Email: info@bioworld.com

Tel: 6123263284

Fax: 6122933841

Bioworld technology, co. Ltd.

Add: No 9, weidi road Qixia District Nanjing, 210046, P. R. China.

Email: info@biogol.com

Tel: 0086-025-68037686

Fax: 0086-025-68035151