

LOR/Loricrin Polyclonal Antibody

Catalog: BS65809

Host: Rabbit

Reactivity: Human, Horse,

BackGround:

This gene encodes loricrin, a major protein component of the cornified cell envelope found in terminally differentiated epidermal cells. Mutations in this gene are associated with Vohwinkel's syndrome and progressive symmetric erythrokatoderma, both inherited skin diseases. [provided by RefSeq, Jul 2008]

Product:

0.01M TBS(pH7.4) with 1% BSA, 0.03% Proclin300 and 50% Glycerol.

Molecular Weight:

~26 kDa

Swiss-Prot:

P23490

Purification&Purity:

affinity purified by Protein A

Applications:

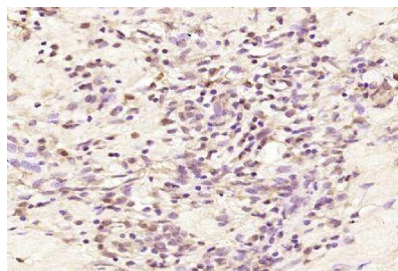
IHC-P=1:100-500

Storage&Stability:

Store at 4 °C short term. Aliquot and store at -18 °C long term. Avoid freeze-thaw cycles.

Specificity:

LOR/Loricrin Polyclonal Antibody detects endogenous levels of LOR/Loricrin protein.

DATA:

Paraformaldehyde-fixed, paraffin embedded (human skin); Antigen retrieval by boiling in sodium citrate buffer (pH6.0) for 15min; Block endogenous peroxidase by 3% hydrogen peroxide for 20 minutes; Blocking buffer (normal goat serum) at 37 °C for 30min; Antibody incubation with (LOR) Polyclonal Antibody, Unconjugated at 1:200 overnight at 4 °C

Note:

For research use only, not for use in diagnostic procedure.

Bioworld Technology, Inc.

Add: 1660 South Highway 100, Suite 500 St. Louis Park, MN 55416, USA.

Email: info@bioworld.com

Tel: 6123263284

Fax: 6122933841

Bioworld technology, co. Ltd.

Add: No 9, weidi road Qixia District Nanjing, 210046, P. R. China.

Email: info@biogot.com

Tel: 0086-025-68037686

Fax: 0086-025-68035151